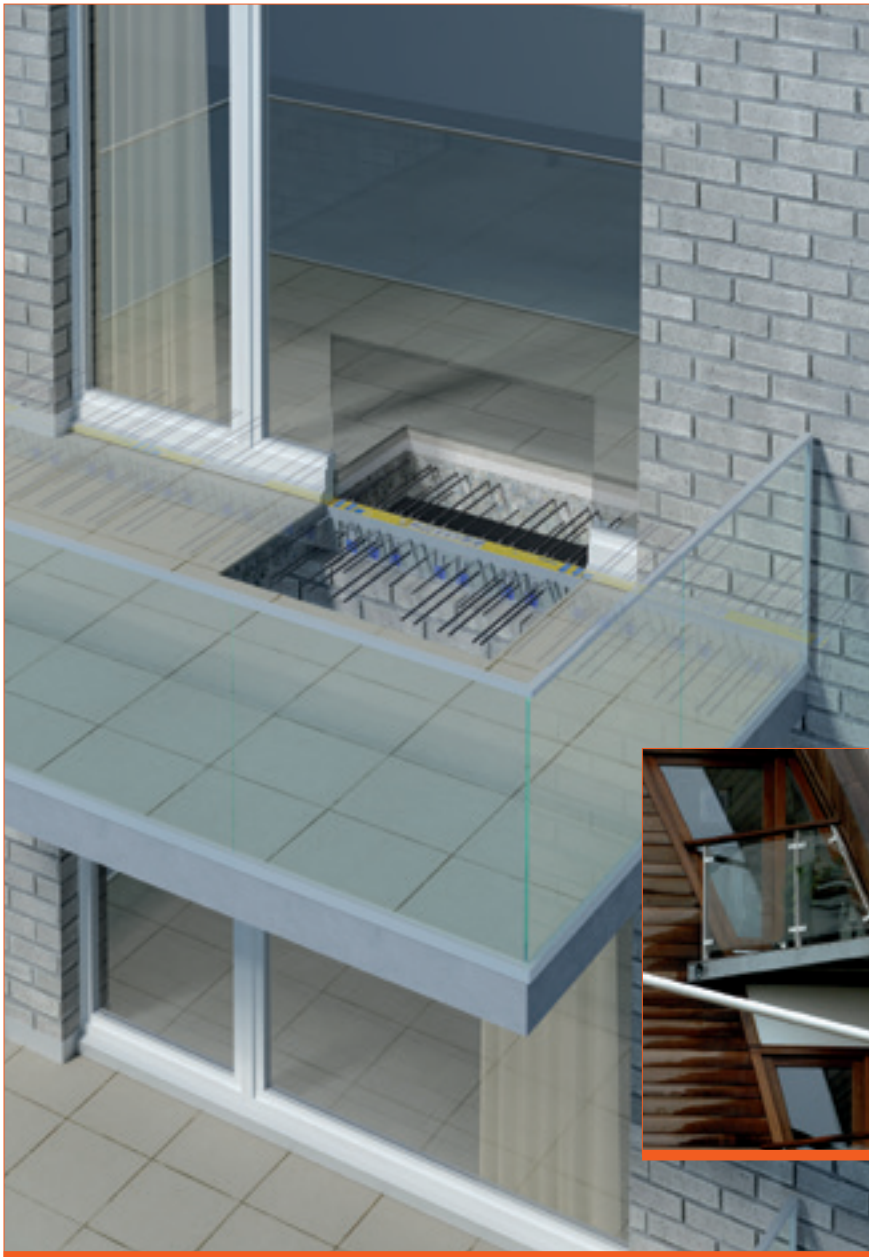


Schöck Isokorb®

Balcony Connectors and Thermal Bridging Solutions

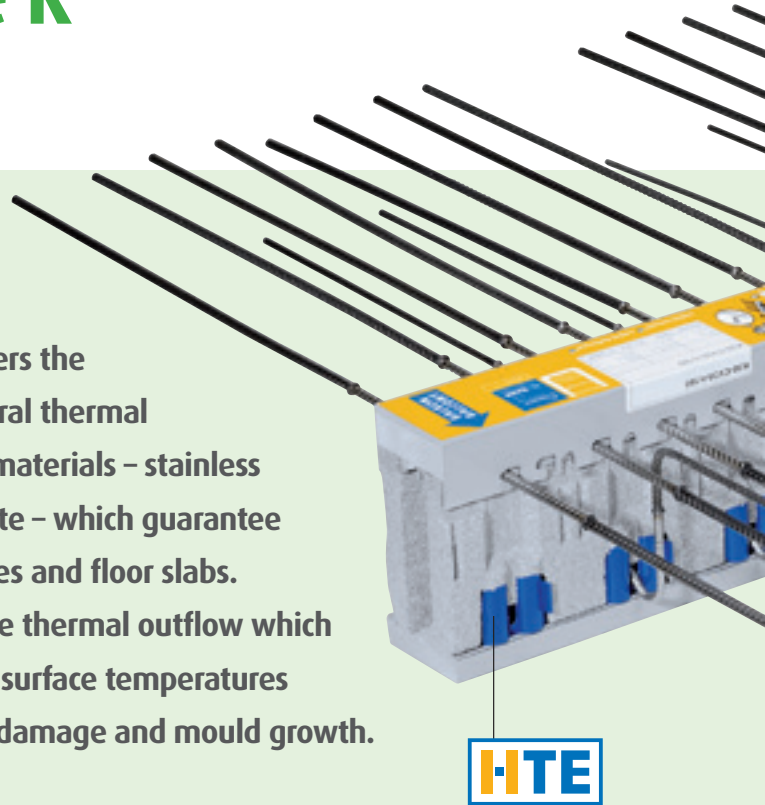


Improving choice, quality and service

Schöck Isokorb® type K

Concrete-to-concrete

The Schöck thermal break element, the Isokorb®, with its simple “drop-in” installation, low thermal conductivity and integral load bearing capacity offers the ideal insulation solution to the problems of structural thermal bridging. It is manufactured from state-of-the-art materials – stainless steel and high density microfibre reinforced concrete – which guarantee the highest quality thermal partitioning of balconies and floor slabs. Schöck Isokorb® thermal breaks dramatically reduce thermal outflow which not only saves energy costs but also means higher surface temperatures inside, eliminating the risk of extra condensation, damage and mould growth.



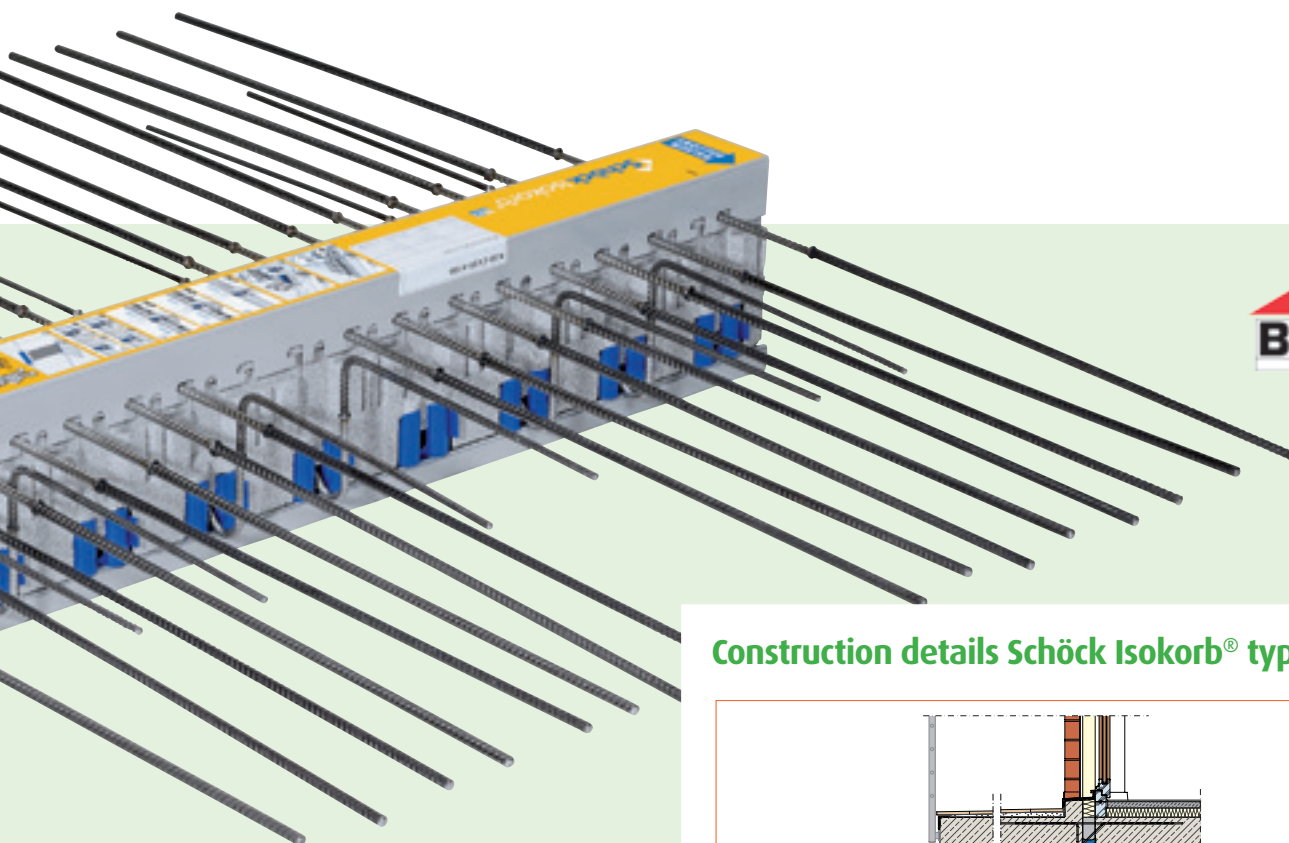
Setting a new benchmark

Using the latest generation of micro stainless steel fibre reinforced concrete pressure-bearing blocks, the Schöck Isokorb® range sets a new benchmark in thermal break technology. The Schöck Isokorb® type K with HTE-pressure-bearing module provides the best thermal performance achievable with thermal breaks today. The new core material of the HTE-Module improves its performance dramatically, reducing thermal conductivity by 50%. This, combined with the change of polystyrene to Neopor®, has the effect of improving the overall performance of the Isokorb® by 20%, e.g. a typical λ_{eq} of an Isokorb K20 is 0,087 (W/m · K)

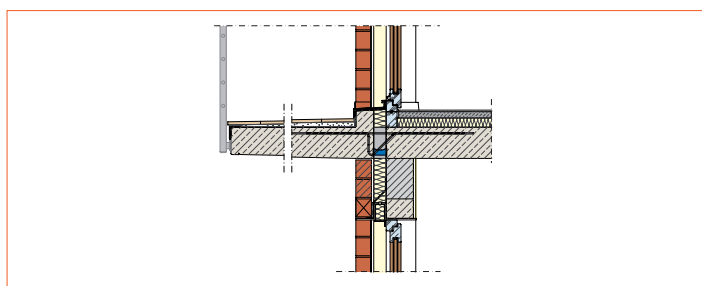
Other advantages in the construction process are:

- The units are light and easily handled by one man
- Drop-in fast installation – averaging less than five minutes per unit
- The product has a uniquely low thermal conductivity
- The first and therefore unique thermal break element with BBA certification, No. 05/4277

Nationwide Depots



Construction details Schöck Isokorb® type K



Construction materials Schöck Isokorb® type K

On-site concrete	Minimum density class C25/30 (at component junctions)
Pressure bearing pad	PE-HD synthetic cloaking
Reinforcement steel	BSt 500S
Steel construction	S235 JRG1
Stainless steel	Construction material no. 1.4571 hardening level S460
	Reinforcement ribs BSt 500 NR, material no. 1.4362 or 1.4571
Fire protection plates	Lightweight building boards, materials class A1, cement-bound fire safety boards, mineral wool: $\rho \geq 150 \text{ kg/m}^3$ Melting point $T \geq 1000^\circ\text{C}$ with integrated fire protection strips
Insulation Material	Neopor® ¹⁾ , polystyrene hard foam with graphite ($\lambda = 0.031 \text{ W/(m} \cdot \text{k)}$)

¹⁾registered brand name of BASF

**For particularly
demanding
concrete-
to-concrete
specifications**

the BBA approved Schöck Isokorb® KXT is available. With 120 mm insulation it is the company's most efficient thermal break ever, offering 30% more thermal performance and 50% greater impact sound insulation compared with the standard type K. Contact us for further information.

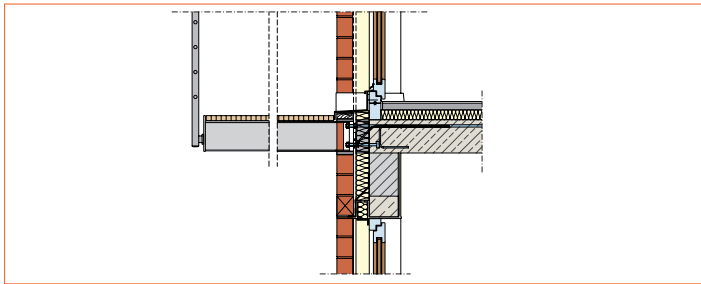
Nationwide Depots

Schöck Isokorb® type KS

Concrete-to-steel & steel-to-steel

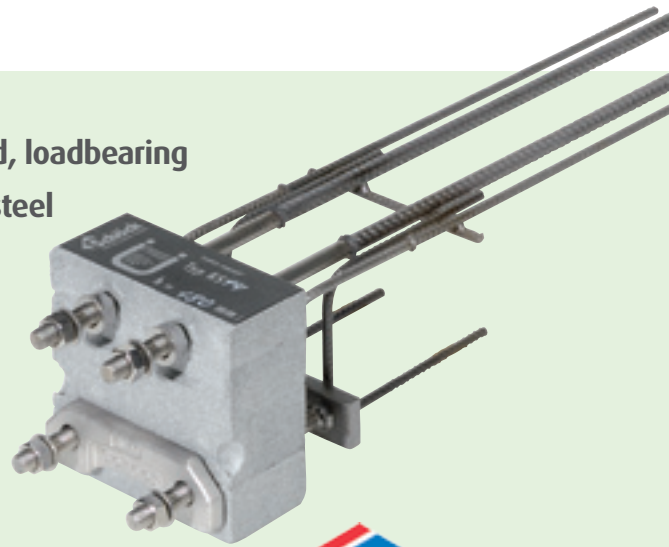
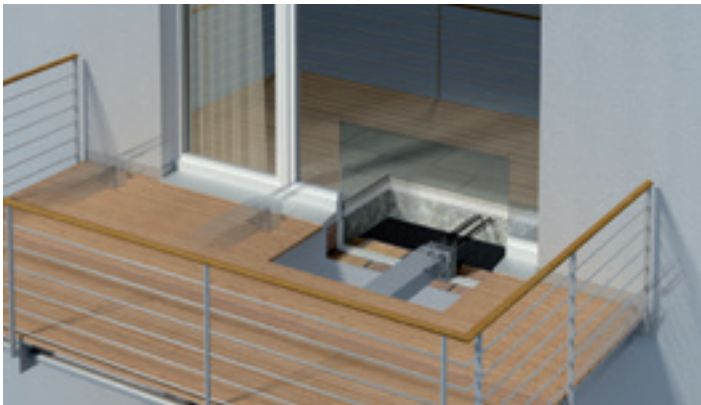
The Schöck Isokorb® type KS enables a thermally insulated, loadbearing connection to be made between reinforced concrete and steel construction components. Fine tuning and adjustment to optimize fitting tolerance is possible.

Construction details Schöck Isokorb® type KS



Construction materials Schöck Isokorb® type KS

Reinforcing steel	B 500 B acc. to BS 4449, and BSt 500 NR
Pressure bearing	S 355 J0
Nonrusting steel	Material no.: 1.4401, 1.4404 and 1. 4571
Pressure plate	Grade A4-70 to BS EN
Spacer shims	ISO 3506
Threaded fasteners	
Insulation material	Neopor®, polystyrene hard foam with graphite ($\lambda = 0.031 \text{ W}/(\text{m} \cdot \text{k})$)



On-site:

- Cuts down on operation time
- Ensures corrosion protection with its stainless steel finish
- Different types ensure the transmission of shear, bending moment and tension, as well as compression
- BBA certification No. 05/4277

Nationwide Depots

Schöck Isokorb® type KST

Concrete-to-steel & steel-to-steel

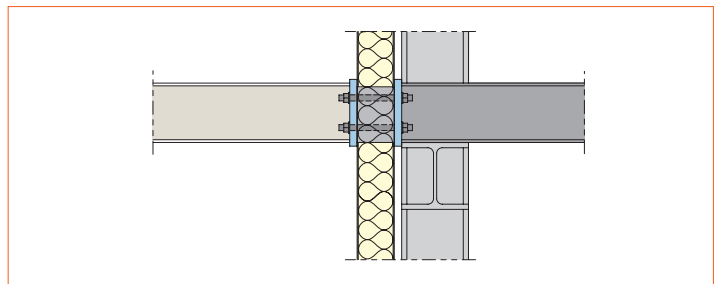
Free cantilever or canopies, balconies or walkways, the Schöck Isokorb® type KST offers complete freedom of design when it comes to steel construction. The unit is able to withstand extremely demanding loads and is effective against bending moment and shear force. Its stainless steel components mean that the unit is completely protected from corrosion.



On-site:

- It is easy to fit with regular end plate connections
- All available steel profiles can be bolted on
- Specific load situations controlled by modular use of components
- Designed to suit loading conditions in residential and commercial buildings
- BBA certification No. 10/4801

Construction details Schöck Isokorb® type KST

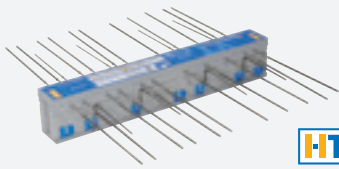


Construction materials Schöck Isokorb® type KST

Nonrusting steel	Material no.: 1.4401, 1.4404 and 1. 4571
Pressure plate	Grade A4-70 to BS EN
Rectangular hollow section	ISO 3506
Threaded fasteners	
Insulation material	Neopor®, polystyrene hard foam with graphite ($\lambda = 0.031 \text{ W}/(\text{m} \cdot \text{k})$)



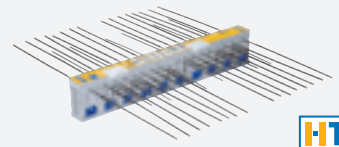
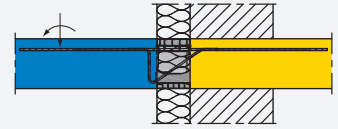
Nationwide Depots



HTE

Schöck Isokorb® type KXT

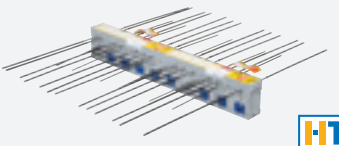
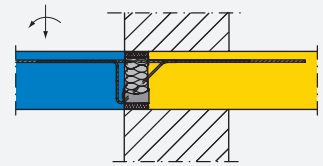
Load bearing element for cantilever balconies, with an insulation thickness of 120 mm.



HTE

Schöck Isokorb® type K

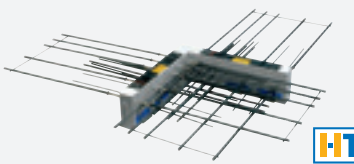
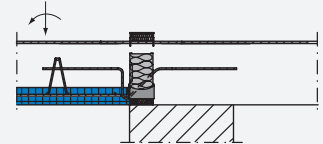
Load bearing element for cantilever balconies. Transfers shear force and bending moment stress. With integrated hanging and edge reinforcement fitted as standard, makes the (normally required) on-site adding of extra stirrups and reinforcement redundant.



HTE

Schöck Isokorb® type KF

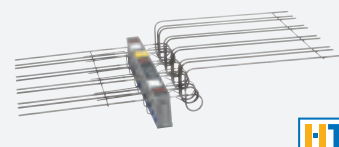
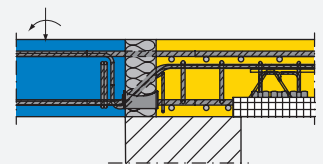
For cantilever hanging slabs as precast elements. Partitioned model specially for the requirements of prefabricating plants. The on-site hanging reinforcement is integrated as standard.



HTE

Schöck Isokorb® type K-corner

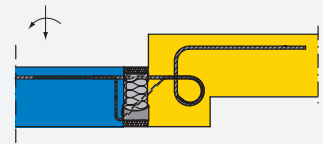
Produced as a supplement to types K and KF, Schöck Isokorb® type K-corner is used to form balconies with outside corners. The on-site hanging reinforcement is integrated as standard.



HTE

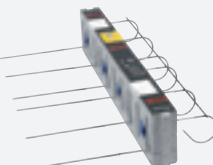
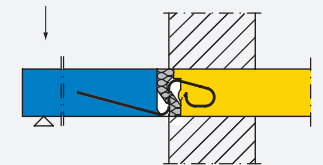
Schöck Isokorb® type K-HV, K-BH, K-WO, K-WU

For stepped cantilever balconies, i.e. where slabs and balconies have to be set at different heights. The on-site hanging reinforcement is integrated as standard.



Schöck Isokorb® type V

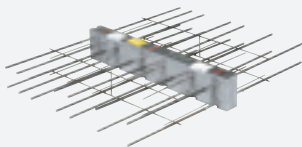
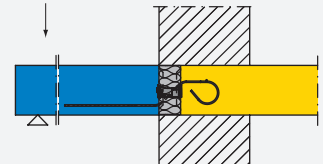
For insulation of balcony slabs with flexible joints, podiums and column supported balconies. Ideal for shear force transfer.



HTE

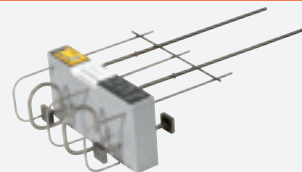
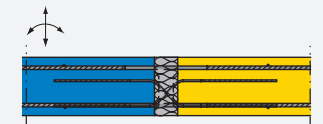
Schöck Isokorb® type Q

For shear and lateral force transfer, also where height and stress points are critical.



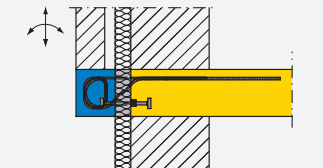
Schöck Isokorb® type D

For insulation of balcony slabs where they appear within the floor slab field. Carries not only positive and negative bending moment stress but also shear forces.



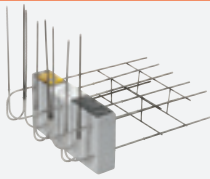
Schöck Isokorb® type O

For insulation of corbelled facing consoles. Point installation according to design requirement spacing.



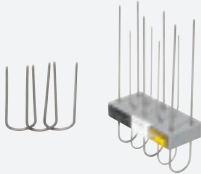
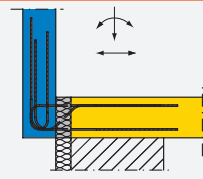
Nationwide Depots

A comprehensive range for every application



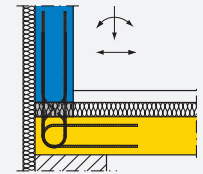
Schöck Isokorb® type F

For insulation between protruding balustrades.
Point installation according to design requirements
regarding spacing.



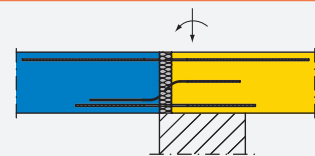
Schöck Isokorb® type A

For insulation between parapets and floor slabs.
Point installation according to design requirements
regarding spacing.



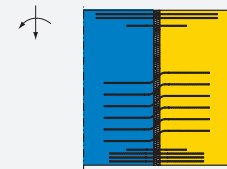
Schöck Isokorb® type S

For insulation at cantilever beams. Carries bending
moment and shear force stress at exact point of origin.
It is designed and manufactured according to the
spacing requirements.



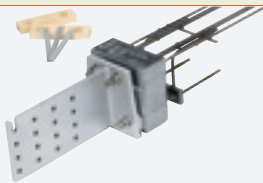
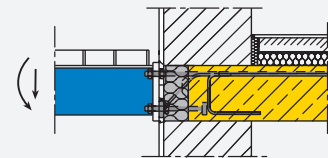
Schöck Isokorb® type W

For insulation at floor/storey level wall height. Carries
bending moment and shear forces both vertically and
horizontally. It is designed and manufactured according to
the spacing requirements.



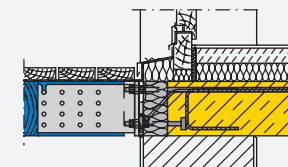
Schöck Isokorb® type KS/QS

The thermally insulating steel connection for free
cantilever and supported steel members on reinforced
concrete components.



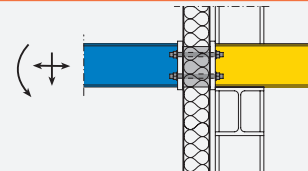
Schöck Isokorb® type KSH/QSH

The thermally insulating connection for free cantilever
and supported timber structures on reinforced
concrete components.



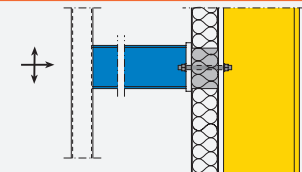
Schöck Isokorb® type KST

The thermal insulation element for where steel-to-steel
cantilever connection is planned.



Schöck Isokorb® type KST-QST

The thermal insulation element for shear forces involving
steel-to-steel construction.



Nationwide Depots

Miers Group Depots Throughout the UK



**Nationwide
supply of building
accessories...**

...we offer

- Independently run business
- Nationwide coverage
- Commitment to the highest standard of service
- A unique level of expertise & experience

Call Miers on

St Neots 01480 702222
Airdrie 01236 541130
Birmingham 0121 2893 293
Bordon 01420 200121
Launceston 01566 721011
Warrington 01925 202128

Iss 3 July 2019

MIERS

Construction Products Ltd

Head Office

Hawkesden Road, St Neots, Cambs PE19 1QS

t 01480 702222

f 01480 702223

e sales@miersconstructionproducts.co.uk

www.miersconstructionproducts.co.uk