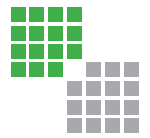


**MIERS**



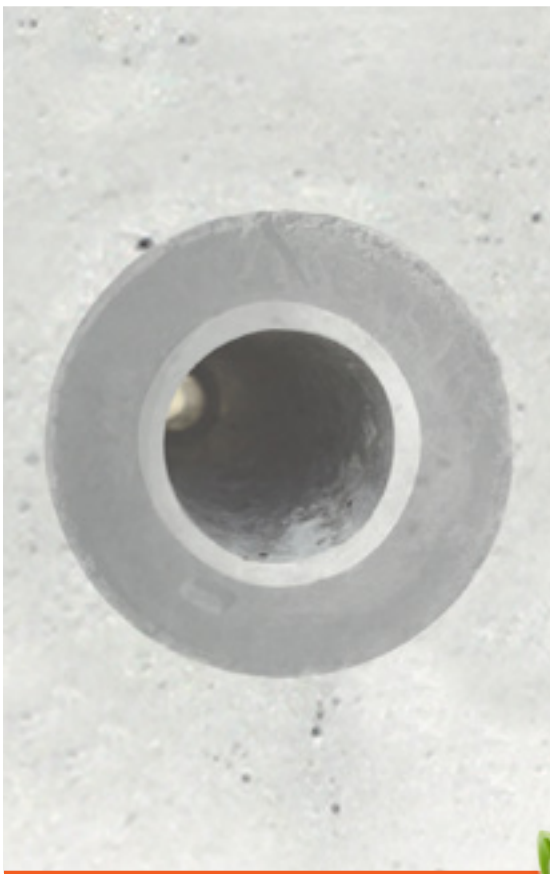
Construction Products Ltd



**Extractable, re-usable  
tie hole sleeves**

 **RivePipe**®

**An extractable and re-usable formwork tie sleeve that can be used in combination with RiveStop to provide a hermetically watertight form tie hole**



- Economical - can be used 20-50 times
- Environmentally friendly - completely recyclable
- Labour saving - units manufactured to suit wall size, no cutting required
- Reduces the amount of plastic left in concrete walls
- Easy to use
- Rapid extraction
- Suits a 15mm core diameter tie rod




**Improving choice, quality and service**



FS 658263

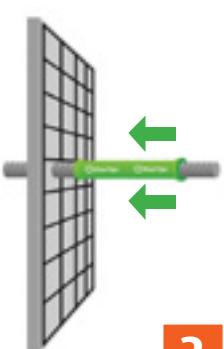
## Extractable, re-usable tie sleeves for use with RiveStop to produce hermetically watertight tie holes

### How does it work?

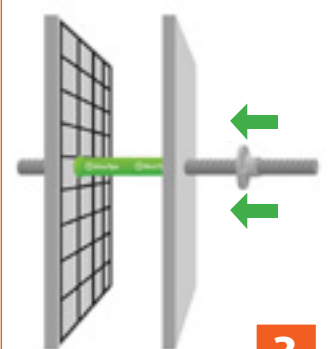


**1**  
Join two RivePipe pieces to form one unit


Wall Size	Bag Quantity
100mm	100
150mm	50
200mm	50
250mm	50
300mm	25
350mm	25
400mm	25



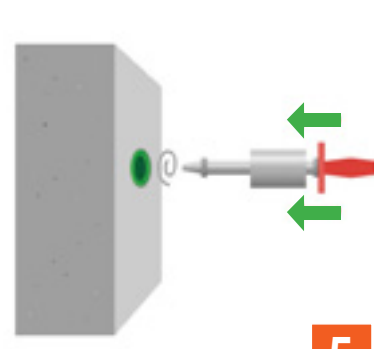
**2**  
Slide over tie bar



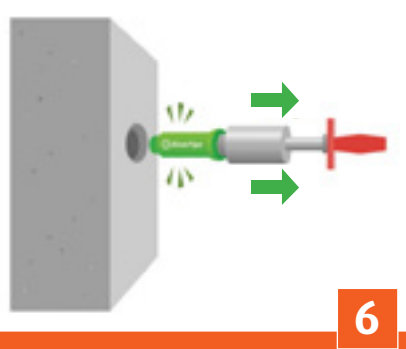
**3**  
Tighten form ties



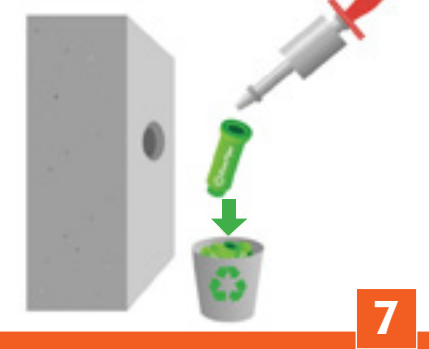
**4**  
Pour concrete




**5**  
Use tool to remove RivePipe



**6**  
Extract RivePipe



**7**  
Store RivePipe for reuse



**8**  
Seal tie hole with RiveStop

Iss 2 July 2019

#### Nationwide Depots

**St Neots** t 01480 702222 f 01480 702223  
**Airdrie** t 01236 541130 f 01236 541135  
**Birmingham** t 0121 2893293 f 0121 2893294  
**Bordon** t 01420 200121 f 01420 200122  
**Launceston** t 01566 721011 f 01566 721012  
**Warrington** t 01925 202128 f 01925 202129

#### Head Office

Hawkesden Road, St Neots, Cambs PE19 1QS  
 t 01480 702222  
 f 01480 702223

e sales@miersconstructionproducts.co.uk  
 www.miersconstructionproducts.co.uk