

Specialist suppliers to Concrete Frame Contractors



Geoplast Formwork

The simple formwork solution

BAG Column Former

Circular column
disposable formwork

Shearstrip

Prefabricated shear reinforcement
system for concrete slabs

Conti Strip

Pull out reinforcement

QuelCast

Cast in Fire Collar

Channel Systems

Solutions to fix components to
concrete structures

Improving choice, quality and service

Geotub
Circular formers



Geotub Panel
Square/rectangular formers



Geopanel Star
Adjustable square/rectangular formwork



Geopanel
Universal formwork panels



Lightweight units

Geoplast Formwork

The simple formwork solution

Advantages

- Lightweight units that are fast and simple to install. Handles lock the units into position with a 90° turn
- Economical and cost effective. Many repeat uses with very little maintenance
- Easy to clean. Just rinse with water
- Easy to store. Can be completely dismantled. Does not need to be stored in a dry environment
- Robust units are resistant to damage
- No release agents needed. Concrete will not stick to the plastic surface
- Outer side of panels are ribbed to allow easy plumbing and anchoring of props
- Environmentally friendly. Many repeat uses and made from recycled materials
- Geopanel Star is adjustable and hence reduces the amount of sizes required
- Reduces pressure on crane time as formwork panels can be fixed and struck by hand



Easy to clean

Nationwide Depots

BAG Column Former

Circular column disposable formwork

Advantages

- Easy to handle and install (1)
- Simply pour the concrete into the tube (2)
- Economical
- High quality finish
- Tear-off strip for easy removal (3)
- Sleeve can aid curing and protect the column

Also available for
square columns



Tube I/D (mm)	Tube Wall Thickness (mm)	Concrete Required(m ³ /mtr)	Weight (kg/mtr)
150	2.80	0.018	1.24
200	2.80	0.031	1.63
240	3.20	0.045	1.96
250	3.20	0.049	2.08
300	3.20	0.071	2.38
350	3.70	0.096	3.09
400	4.10	0.126	3.52
450	4.10	0.159	4.50
500	4.60	0.196	5.44
550	4.60	0.237	5.99
600	5.00	0.283	6.53
650	5.00	0.332	7.16
700	5.00	0.385	7.71
750	5.00	0.442	8.26
800	5.50	0.502	8.81
850	5.50	0.567	9.36
900	5.50	0.636	9.91
950	5.50	0.708	10.46
1000	5.90	0.785	11.11
1100	5.90	0.950	12.11
1200	5.90	1.130	13.21

BAG Square Column Former

Size (mm)	Tube Wall Thickness (mm)	Concrete Required(m ³ /mtr)	Weight (kg/mtr)
200 x 200	300	0.040	3.10
240 x 240	360	0.057	3.90
250 x 250	374	0.062	4.00
300 x 300	458	0.090	5.20
350 x 350	514	0.122	6.00
400 x 400	586	0.160	7.60
450 x 450	666	0.202	8.70
500 x 500	736	0.250	9.80

Erect the disposable tube
checking its vertical alignment

1



Pour the
concrete into
the tube

2



Tear off the strip and
roll down the tube

3



Nationwide Depots



Shearstrip

Prefabricated shear reinforcement system for concrete slabs

Shearstrip is used for the transmission of high shear forces in flat floor applications with reduced requirements for formwork and reinforcement and for optimum use of space. They consist of double-headed anchors connected by a strip and are used within a slab to provide additional reinforcement around columns.

Advantages

- Increased load carrying capacity
- Quick and simple installation
- Installation possible from the top and bottom
- Simplified formwork design
- Can be used for flat ceilings from a thickness of 180mm
- Lower construction height of the ceiling due to higher load-carrying capacity than conventional reinforcement technology
- No thickening of reinforcement around column heads
- Can be used for all support positions and support forms

Design Service Available



Manufacture

Shearstrip is manufactured from 500C Grade Rebar Double Headed Studs, conforming to the strength and dimensional requirements incorporated within BS 8110 and BS EN 1992-1-1 (EC2).

Installation

Shearstrip rails are placed around the column in a calculated arrangement to meet the designed specification. The number, height and depth of the rails are determined by a calculation made using the criteria of the particular job. The carrier rails ensure correct positioning of the studs.

Nationwide Depots

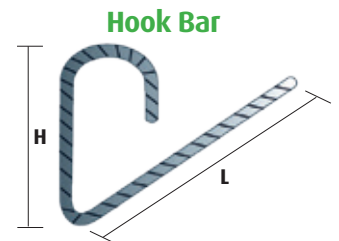
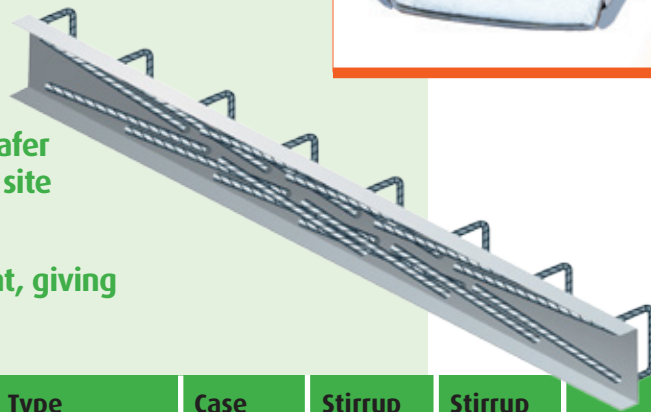
Conti Strip

Pull out reinforcement

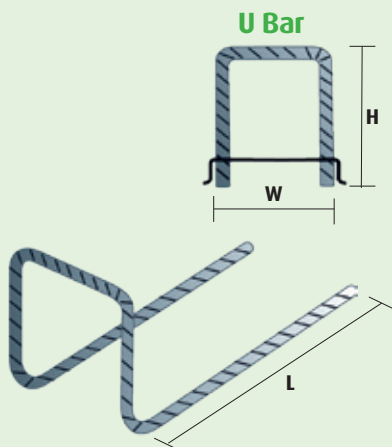
A simple and cost effective method of providing reinforcement connection across concrete joints. The system comprises pre-bent reinforcing bars within a steel casing. The unit is cast into the first pour and when the contractor is ready remove the lid and bend out the starter bars.

Advantages

- Simplifies formwork design and accelerates pour schedules
- No need to damage formwork by drilling or cutting
- Starter bars are housed within their case until ready for use, leaving a safer working environment on site
- Easy to use
- Forms a rebate in the joint, giving better shear connection



Stock sizes



Type	Case Width	Stirrup Width "W"	Stirrup Height "H"	Bar Size	Centres	Lap Length "L"
Hook Bar						
CS85T12150	85	-	170	T12	150	480
CS85T12200	85	-	170	T12	200	480
CS11T16150	110	-	170	T16	150	640
CS11T16200	110	-	170	T16	200	640
U Bars		"W"	"H"			"L"
CS140T12150	140	120	170	T12	150	480
CS140T12200	140	120	170	T12	200	480
CS160T12150	160	140	170	T12	150	480
CS160T12200	160	140	170	T12	200	480
CS190T12150	190	160	170	T12	150	480
CS190T12200	190	160	170	T12	200	480
CS190T16150	190	160	170	T16	150	640
CS190T16200	190	160	170	T16	200	640
CS240T12150	240	220	170	T12	150	480
CS240T12200	240	220	170	T12	200	480
CS240T16150	240	220	170	T16	150	640
CS240T16200	240	220	170	T16	200	640

All dimensions in millimetres

Nationwide Depots



QuelCast

Cast in Fire Collar

QuelCast Cast In Fire Collars prevent the spread of fire through plastic pipes and cables where they penetrate concrete floors. QuelCast Fire Collars are constructed from a robust polypropylene material and contain a high performance intumescent material which reacts under the influence of heat. This will exert pressure on the pipe as it softens, to form a carbonaceous char which provides an effective insulation plug thus preventing smoke and fire passing through to the adjoining compartment.

Advantages

- Up to 4 hour fire rating (EI240)
- Suitable for PVC, PVC-U, PE, HDPE, MDPE, & PP pipes
- Available to suit 50mm, 110mm & 160mm pipes
- Performance unaffected by weathering (Type X Durability)
- Quick & simple installation
- Integrated moisture and smoke seal
- Strong lid to carry foot traffic and light access equipment
- No backfilling required
- Compact footprint allows for closer positioning of pipes

Standards and Approvals

- Fire resistance testing to BS EN 1366-3:2009
- EI60, EI120, EI180, EI240
- Classified to EN 13501-2: 2007 + A1: 2009



QuelCast Manifold



QuelCast Cast In Fire Collar with a Manifold on the Top



QuelCast Cast In Fire Collar installed with a Manifold on the Bottom

QuelCast Manifold has been designed and developed to create a 75mm recess in the floor slab either on the top or on the bottom of the floor slab plastic pipes can then be installed closer to the ceiling or floor.

Performance

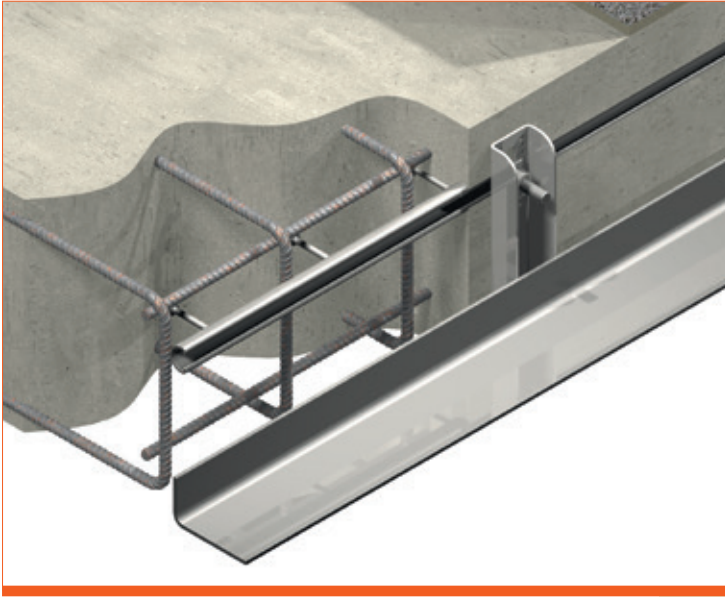
Product Code and Description	To suit pipe diameter	Fire Rating
QUELCAST50 - Cast In Fire Collar	50mm	Up to 4hrs
QUELCAST110 - Cast In Fire Collar	110mm	Up to 4hrs
QUELCAST160 - Cast In Fire Collar	160mm	Up to 4hrs
QUELCAST-MANIFOLD - Recess Former	QUELCAST110	n/a



Nationwide Depots

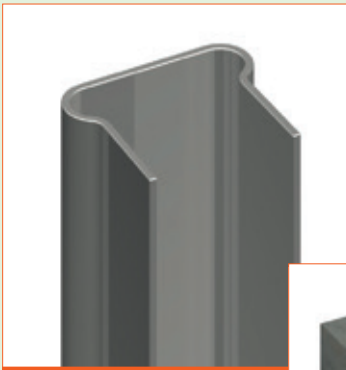
Channel Systems

Solutions to fix components to concrete structures



When looking for a method to fix components to concrete structures, ACS Cast-in channels provide a simple and effective solution. Our extensive range of products are specially designed to allow fixing to slender or highly reinforced concrete and consist of both cold rolled channels suitable for static loads and hot rolled channels for dynamic loads.

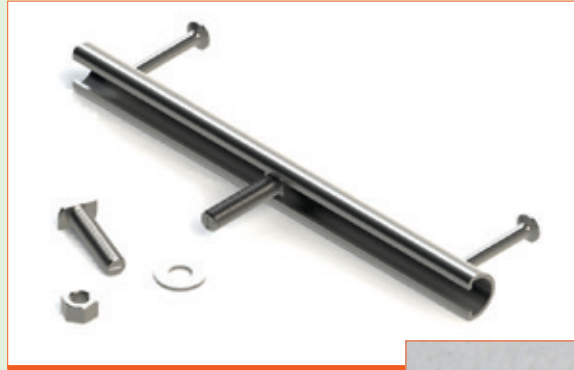
21/19 Apex channel



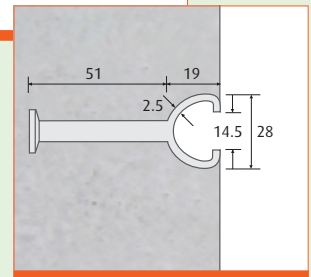
Brick tie channel



31/21 Axis curve channel



Brickwork support channel



Designed and manufactured to BS EN 100088, BS EN ISO 3506 and ETAG 001



Technical details available on request.

All other types and sizes of channels are available.

Nationwide Depots

Miers Group Depots Throughout the UK



**Nationwide
supply of building
accessories...**

...we offer

- Independently run business
- Nationwide coverage
- Commitment to the highest standard of service
- A unique level of expertise & experience

Call Miers on

St Neots 01480 702222
Airdrie 01236 541130
Birmingham 0121 2893 293
Bordon 01420 200121
Launceston 01566 721011
Warrington 01925 202128

Iss 3 July 2019



Construction Products Ltd

Head Office

Hawkesden Road, St Neots, Cambs PE19 1QS

t 01480 702222

f 01480 702223

e sales@miersconstructionproducts.co.uk

www.miersconstructionproducts.co.uk