

Brickwork Accessories



Improving choice, quality and service



FS 658263

Welcome

DPCs

Weep Vents

Wall Ties

Cavity Closers

Reinforcement

Windposts

Sheeting

Fixings

Accessories

Welcome to the Miers Construction Brick Accessories Catalogue.

Miers Construction Products is an independent supplier of construction products delivering from a number of locations across the UK.

We aim to provide our customers with a 'single source' connection to supplies, products and technology. We are dedicated in our efforts to become a valuable supplier/partner by providing products and services that outperform all standards and expectations and offering unparalleled service through dedicated employees whom are committed to being the best in our industry.

Goals:

- To be the most important and valued supplier to our customers.
- To build relationships with our customers and suppliers based upon trust and respect.
- To build a reputation that will expand our business through our principles and commitment to our customers.
- To provide new products, technologies and innovative ideas that change and improve our customers efficiencies and methods of construction.

Follow us on:   

Call Miers on

St Neots 01480 702222
Airdrie 01236 541130
Birmingham 0121 2893 293
Bordon 01420 200121
Launceston 01566 721011
Warrington 01925 202128

e sales@miersconstructionproducts.co.uk
w www.miersconstructionproducts.co.uk

■ Visqueen Zedex CPT DPC

Visqueen Zedex CPT high performance DPC & cavity tray system is manufactured from co-polymer thermoplastic (CPT) providing all the characteristics necessary for it to perform effectively for the lifetime of the building in which it is incorporated.

Width (mm)	Length (m)	m ² /Roll
100	20	2
150	20	3
225	20	4.5
300	20	6
450	20	9
600	20	12
900	20	18
1000	20	20
1200	20	24

VISQUEEN
BUILDING PRODUCTS



■ Zedex Housing Grade DPC

Zedex Housing Grade DPC is suitable for housing construction up to three storeys and out performs all other flexible housing grade DPCs. It is strong and puncture resistant, also with excellent workability in winter conditions.

Width (mm)	Length (m)	m ² /Roll
100	20	2
150	20	3
225	20	4.5
300	20	6
450	20	9
600	20	12
900	20	18



■ Visqueen Zedex High Bond DPC

Visqueen Zedex High Bond DPC is a high performance heavy duty DPC suitable for general cavity tray applications including parapet walls, beneath copings and cappings, in gas resistant applications and complex detailing work at ground level. Visqueen Zedex High Bond DPC can be torch bonded to masonry units and all laps are homogenously sealed during the torch bonding process.

Key Features

- A high performance DPC
- Superior performance in low compressive load applications
- Excellent mortar adhesion properties
- Low permeability to harmful gases
- Contains no pitch or plasticisers

Width (mm)	Length (m)	m ² /Roll
450	8	3.6
600	8	4.8
1000	8	8

Sand finished surface

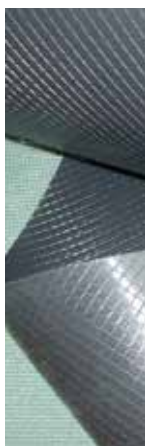


VISQUEEN
BUILDING PRODUCTS

■ Toughsheet Polythene DPC

Polythene DPC which conforms to BS6515, providing a cost effective and durable DPC.

Width (mm)	Length (m)	m ² /Roll
100	30	3
150	30	4.5
225	30	6.75
300	30	9
450	30	13.5
600	30	18
900	30	27



toughsheet **B**
BUILDING PRODUCTS

■ DPC Accessories

■ DPC Fixing Strip



Sizes (mm)	Pack Qty
25 x 3 x 2000	20

■ DPC Fixing Pins



Sizes

Firtree fixings (for insulation)
6 x 40mm
Plastic DPC fixings pins

■ DPC Jointing Tape



Sizes

100mm x 15m
100mm x 10m
50mm x 10m

VISQUEEN
BUILDING PRODUCTS

Nationwide Depots

■ ARC DPC Products

■ Party Wall DPC

Key Features

- Up to 4 hours fire integrity
- Suitable for cavities up to 300mm
- Complies to Robust Detail, Part E and NHBC standards
- Designed to be fitted as brickwork progresses
- Also available for horizontal applications
- Designed to be friction fitted
- Excellent acoustic properties

Sizes

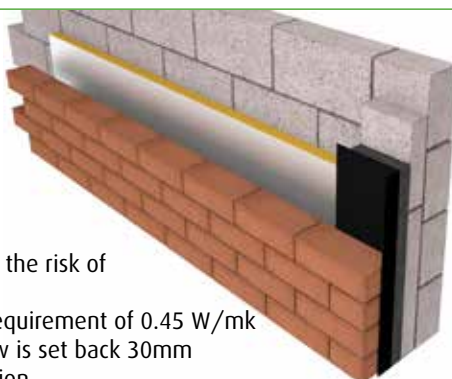
75 x 260/340 x 1200mm, 8 per pack (75mm cavity)
100 x 260/340 x 1200mm, 6 per pack (100mm cavity)
125 x 260/340 x 1200mm, 4 per pack (125mm cavity)
150 x 260/340 x 1200mm, 4 per pack (150mm cavity)
340mm DPC width



■ Insulated DPC

Key Features

- Closes off cavities around window and door openings with cut blocks
- Easy to install
- Significantly reduces the risk of cold bridging
- Exceeds minimum requirement of 0.45 W/mk provided the window is set back 30mm
- Polyethylene insulation



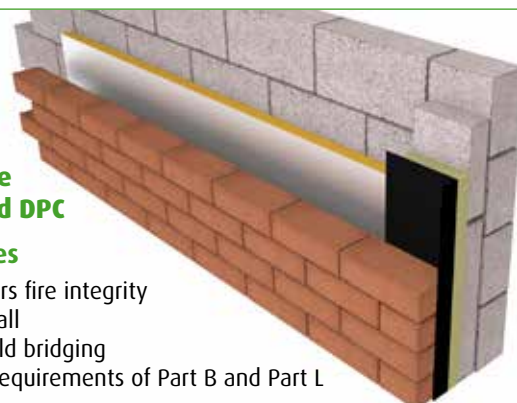
Sizes

17 x 100/165mm x 10m coil, 6 per pack
17 x 140/225mm x 10m coil, 5 per pack
Non standard sizes available on request

■ Rockfibre Insulated DPC

Key Features

- Up to 4 hours fire integrity
- Easy to install
- Prevents cold bridging
- Meets the requirements of Part B and Part L



Sizes

35 x 100/165 x 1200mm, 50 per pack
45 x 100/165 x 1200mm, 40 per pack
55 x 100/165 x 1200mm, 40 per pack
65 x 100/165 x 1200mm, 30 per pack

*Also available in 140mm

■ ARC Cavity Stop Socks & TCBs

Key Features

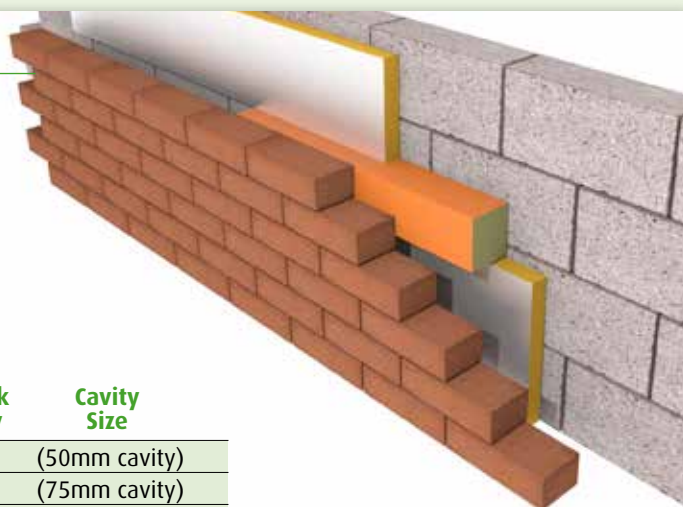
- Polythene encapsulated rockfibre cavity fire barrier
- Up to 4 hours fire integrity for masonry construction
- 1 hour fire integrity for timber frame
- Suitable for cavities up to 300mm
- Complies to Robust Detail Part E and Building Regulations
- Designed for a compression fit
- Excellent acoustic properties

Sizes mm

Pack Qty

Cavity Size

65 x 65 x 1200	40	(50mm cavity)
90 x 75 x 1200	35	(75mm cavity)
120 x 100 x 1200	20	(100mm cavity)
135 x 120 x 1200	15	(125mm cavity)
160 x 120 x 1200	12	(150mm cavity)



Non standard sizes available on request

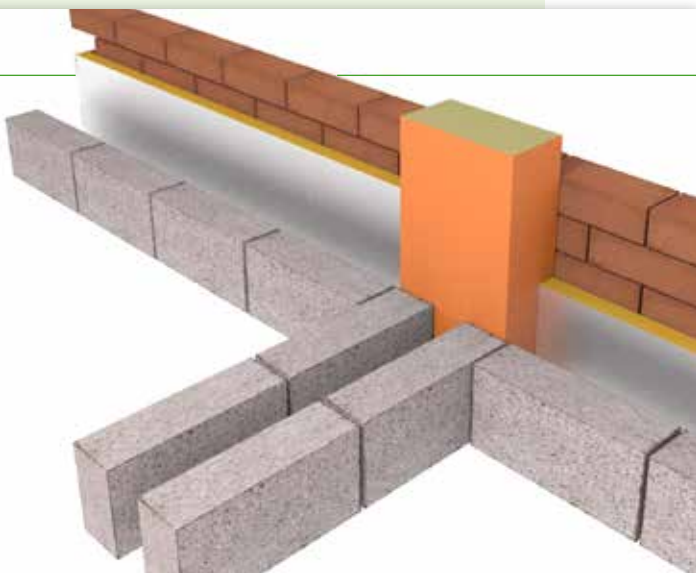
Nationwide Depots

■ ARC Party Wall Cavity Stop Sock

Key Features

- Up to 4 hours fire integrity for masonry construction
- 1 hour fire integrity for timber frame
- Suitable for cavities up to 300mm
- Complies to Robust Detail Part E and Building Regulations
- Excellent acoustic properties

Sizes mm	Pack Qty	Cavity Size
80 x 250 x 1200	10	(75mm cavity)
105 x 250 x 1200	8	(100mm cavity)
130 x 250 x 1200	6	(125mm cavity)
155 x 250 x 1200	6	(150mm cavity)
205 x 250 x 1200	4	(200mm cavity)

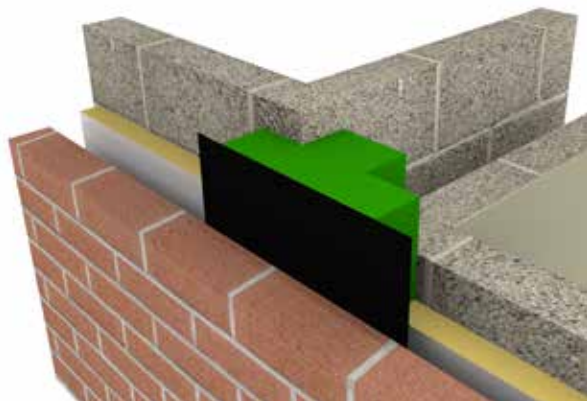


■ ARC T-Barrier

Key Features

- Minimises thermal bypass
- Creates an effective edge seal around the party wall cavity
- Zero U-value at party wall junction can be achieved
- Available to suit masonry or timber frame applications

Sizes mm	Pack Qty	Party Wall Cavity Size	External Cavity Size
85/100 x 250 x 1200	6	(75mm cavity)	(100mm cavity)
85/120 x 250 x 1200	6	(75mm cavity)	(120mm cavity)
85/125 x 250 x 1200	6	(75mm cavity)	(125mm cavity)
85/150 x 250 x 1200	3	(75mm cavity)	(150mm cavity)
110/110 x 250 x 1200	6	(100mm cavity)	(100mm cavity)
110/120 x 250 x 1200	4	(100mm cavity)	(120mm cavity)
110/125 x 250 x 1200	4	(100mm cavity)	(125mm cavity)
110/150 x 250 x 1200	3	(100mm cavity)	(150mm cavity)



■ ARC Smart Closer

Key Features

- Closes off cavities around window and door reveals
- Prevents cold bridging
- Available for cavity widths from 50 to 300mm
- Supplied in 2.4m lengths
- Single flange available for check reveal details



Sizes mm	Pack Qty	Cavity Size
50 x 2400	8	(50mm cavity)
75 x 2400	8	(75mm cavity)
100 x 2400	8	(100mm cavity)
125 x 2400	6	(125mm cavity)
150 x 2400	6	(150mm cavity)

Non standard sizes available on request

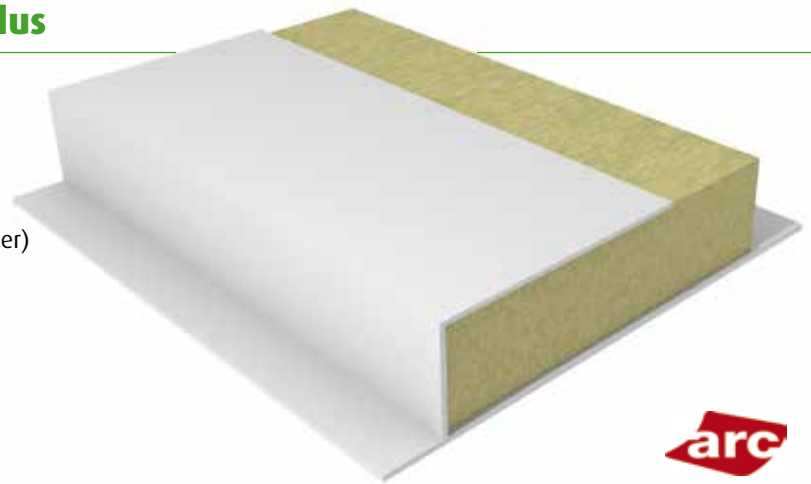
ARC Brick Ties available to suit in bags of 100

Nationwide Depots

■ ARC Eco-Closer and Eco-Closer Plus

Key Features

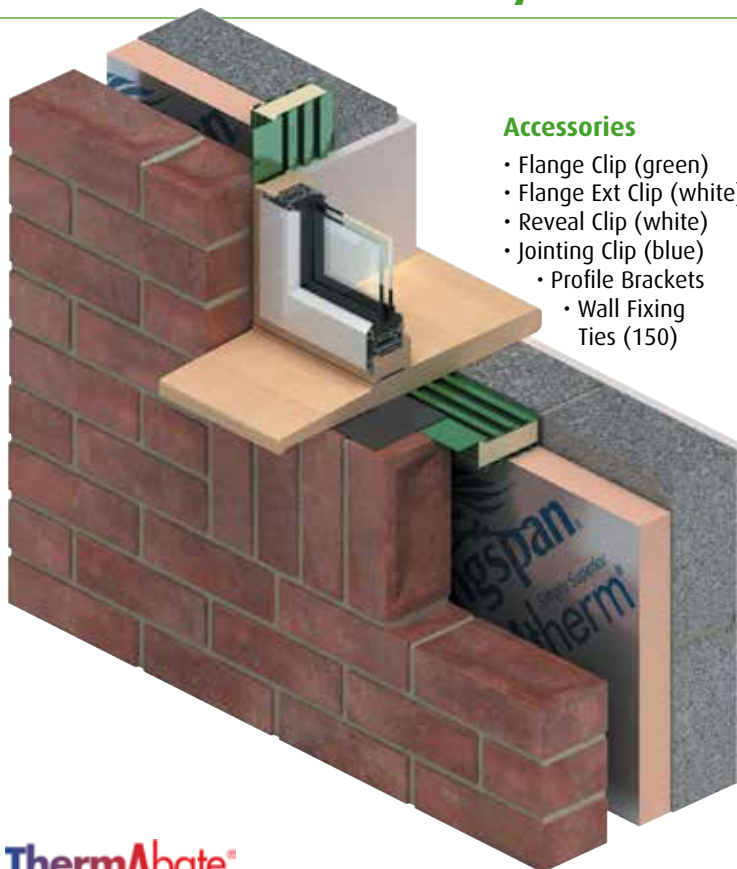
- Up to 1 hour fire integrity
- Closes off cavities around window and door reveals
- Prevents cold bridging
- Insulated with foil faced non-combustible rockfibre
- Available for cavity widths from 50 to 150mm (Eco-Closer) and 175mm to 300mm (Eco-Closer Plus)
- Plastic profile acts as DPC



Eco-Closer		
Sizes mm	Pack Qty	Cavity Size
50 x 2400	8	(50mm cavity)
65 x 2400	8	(65mm cavity)
75 x 2400	8	(75mm cavity)
85 x 2400	8	(85mm cavity)
90 x 2400	8	(90mm cavity)
95 x 2400	8	(95mm cavity)
100 x 2400	8	(100mm cavity)
110 x 2400	6	(110mm cavity)
125 x 2400	6	(125mm cavity)
135 x 2400	6	(135mm cavity)
150 x 2400	6	(150mm cavity)
As above but single flange for check reveal	As above	(50mm - 150mm cavity)

Eco-Closer Plus		
Sizes mm	Pack Qty	Cavity Size
175 x 2400	3	(175mm cavity)
200 x 2400	3	(200mm cavity)
225 x 2400	2	(225mm cavity)
250 x 2400	2	(250mm cavity)
275 x 2400	1	(275mm cavity)
300 x 2400	1	(300mm cavity)
As above but single flange for check reveal	As above	(175mm - 300mm cavity)

■ Thermabate Insulated Cavity Closers



Accessories

- Flange Clip (green)
- Flange Ext Clip (white)
- Reveal Clip (white)
- Jointing Clip (blue)
- Profile Brackets
- Wall Fixing Ties (150)

Thermabate provides a simple and efficient method of closing cavities around openings in masonry walls. The insulating foam core prevents thermal bridging, while the PVC-U box section forms a positive damp proof barrier and key for the direct application of plaster.

It effectively prevents condensation, pattern staining and mould growth frequently associated with traditional methods of closing cavities. Thermabates closes the cavities and avoids problems encountered when supporting traditional dpc's and insulation boards during construction.

Key Features

- Continuous insulation
- Reduced heat loss
- Weather resistant
- BBA Certificate No. 91/2648

Length (mm)	Width (m)	T (mm)	Colour
3000	210	50	brown
3000	210	65	black
3000	210	75	white
3000	210	85	yellow
3000	210	90	orange
3000	210	100	green



Nationwide Depots

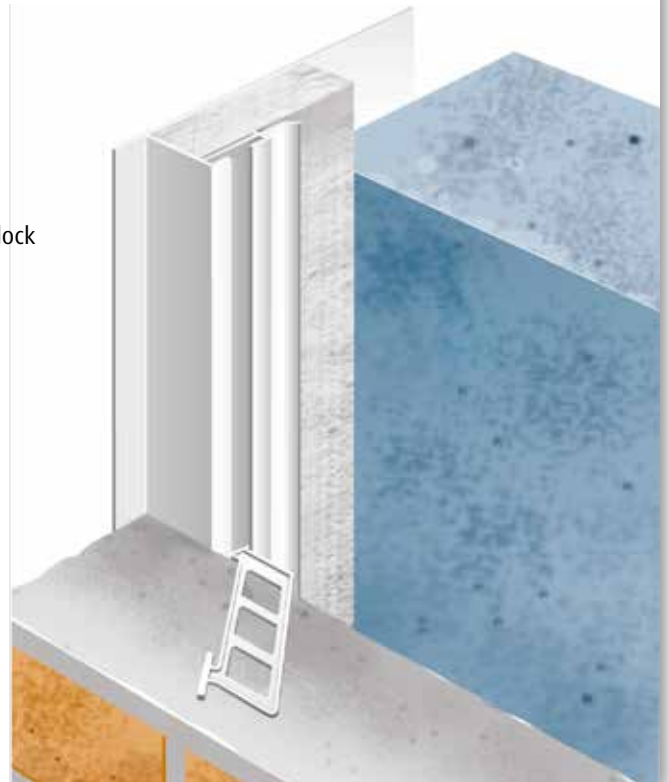
■ Timloc Thermo-loc EPS Cavity-Closer

Key Features

- Provides an effective DPC and thermal barrier between frame, inner and outer wall leaf
- Exceeds the minimum thermal resistance path of 0.45m²K/W stipulated in Robust Details 'limited thermal bridging and air leakage'
- Rigid profile extrusion
- Integrated and flexible water strip to reduce air leakage
- Simple on-site trimming to cope with 'rogue' cavity widths
- Can be built in with PVC ties as brickwork progresses or simply nail to block
- BBA Approved

Sizes

2.4m lengths
50 - 100mm, 5 lengths per pack
100mm+ cavities available



■ Timloc Everdry Cavity Tray



Timloc Everdry adjustable stepped cavity trays for brickwork are used for the following applications.

- At the abutment of a pitched roof with a cavity wall
- On external walls – not exceeding 120mm thickness – built from standard brickwork or similar sized components with regular course heights, including mortar of approx. 75mm
- On roof pitches of 25 degrees and above
- Cavity widths of between 50mm – 110mm

Key Features

- 195mm high back upstand
- Adjustable upstand to cover 50mm – 110mm cavities
- Roof pitch marks on tray upstand to give installation guidance
- Cavity tray builds to outer leaf only to speed up installation and allowing both inner and outer leaves to be built independently if required
- BBA approved



Nationwide Depots

■ Rytweep Weep Vent

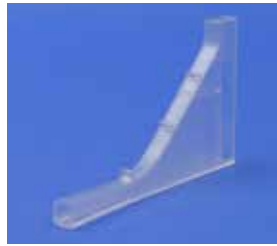
An unobtrusive cavity weep hole duct. Virtually unseen when installed, showing only the small weep outlet.

Key Features

- Simple design for quick and easy fitting with no special brickwork required
- Flush face
- Lugs aid mortar adhesion for efficient installation
- BBA approved



■ Weep Vent



Sizes

101 x 66 x 10mm

Colours

Clear, Terracotta and Buff/Sand

Units per box

200

■ Tube



Advantages

- Extension for Rytweep and to allow rendering
- Flush face
- cut to required size

Sizes

500 x 6mm

■ Airflow Dual Weep Vent



Units per box

50

Colours

Black, Brown, Buff, Terracotta, Clear, Grey and White

■ Timloc Weep Vents

■ Tunnel Weep Vent



Pack sizes 50 per pack

■ Cavity Wall Weep Vent Type 1143



Colours

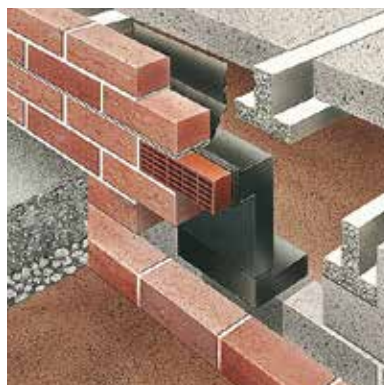
Buff, Cream, Terracotta, White, Grey and Black

■ Timloc Underfloor & Through Wall Venting

High performance venting may be used instead of a conventional airbrick.

Key Features

- Telescopic Under Floor Vent
- Cavity Sleeve
- Horizontal Front Extension
- Vertical Extension Piece
- Duct Adapter
- Horizontal Rear Extension



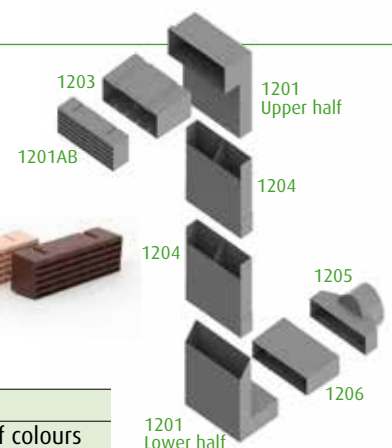
Available with a range of attachments



Sizes (Air Brick)

69 x 215 x 60mm

Available in a range of colours



Nationwide Depots

■ Vista Housing Ties (Masonry/Masonry)

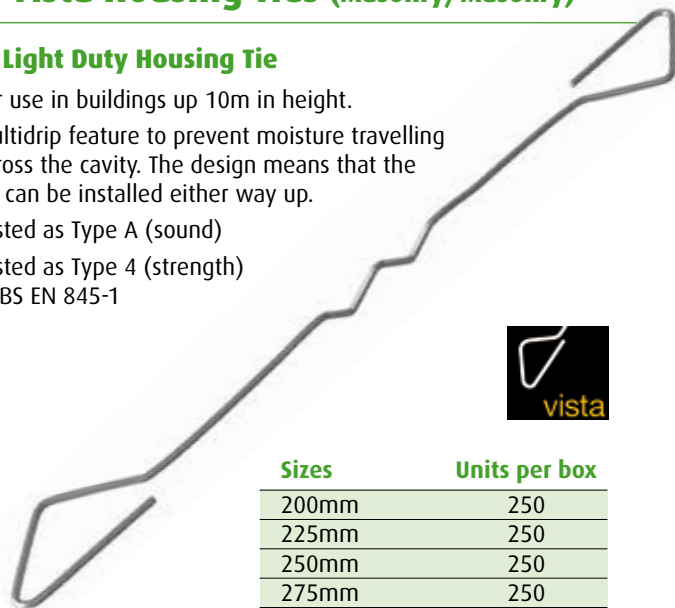
■ Light Duty Housing Tie

For use in buildings up to 10m in height.

Multidrip feature to prevent moisture travelling across the cavity. The design means that the tie can be installed either way up.

Tested as Type A (sound)

Tested as Type 4 (strength)
to BS EN 845-1



Sizes	Units per box
200mm	250
225mm	250
250mm	250
275mm	250

■ General Purpose Wall Tie

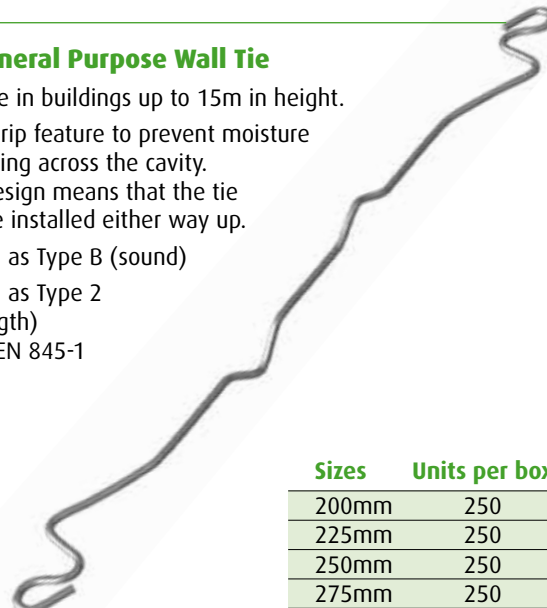
For use in buildings up to 15m in height.

Multidrip feature to prevent moisture travelling across the cavity.

The design means that the tie can be installed either way up.

Tested as Type B (sound)

Tested as Type 2
(strength)
to BS EN 845-1



Sizes	Units per box
200mm	250
225mm	250
250mm	250
275mm	250

■ Vista Heavy Duty Tie (Masonry/Masonry)

■ VST1 - Type 1 Heavy Duty Tie

This tie has a multidrip feature to prevent moisture travelling across the cavity. A great feature of its design means that the tie can be installed either way up. For use in any height building.

Tested as Type B (sound) and Tested as Type 1 (strength) to BS EN 845-1

Sizes	Units per box
200mm	250
225mm	250
250mm	250
275mm	250
300mm	250



■ Vista Timber Frame Tie (Timber/Masonry)

■ Timber Frame Tie

Stainless Steel masonry-timber tie for 50-100mm cavities in timber frame buildings.

Accommodates vertical movement.

Tested as type B (sound).

Tested as type 6 (strength) to BS EN 845-1.

Supplied complete with 50mm x 3.35mm
Stainless Steel Annular Ring Nails.



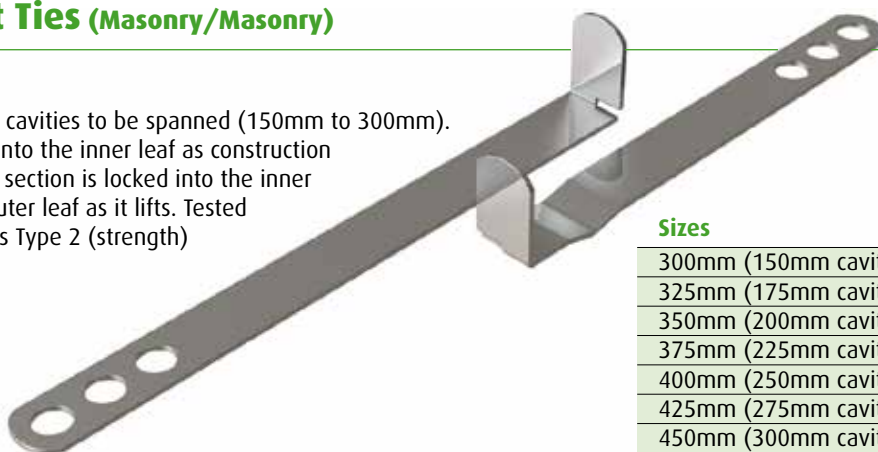
Size (mm)	Units	Per
125 (50 cavity)	250	Box
150 (75 cavity)	250	Box
175 (100 cavity)	250	Box

Nationwide Depots

■ Vista Two Part Ties (Masonry/Masonry)

■ TPT - Two Part Tie

Two part tiess allows larger cavities to be spanned (150mm to 300mm). The shorter section is built into the inner leaf as construction proceeds, whilst the longer section is locked into the inner section and built into the outer leaf as it lifts. Tested as Type B (sound). Tested as Type 2 (strength) to BS EN 845-1.



Sizes	Units per box
300mm (150mm cavity)	200
325mm (175mm cavity)	200
350mm (200mm cavity)	200
375mm (225mm cavity)	100
400mm (250mm cavity)	100
425mm (275mm cavity)	100
450mm (300mm cavity)	100

■ Vista Frame Cramps (Masonry/Steel or Concrete)

■ VE7 - Frame Cramp

Frame cramp for restraining masonry to new or existing structures and for building in non-structural elements (frames etc).



Sizes	Units per box
75mm	250
100mm	250
125mm	250
150mm	250
175mm	250
200mm	250
225mm	200
250mm	200
275mm	200
300mm	200



Available with a slotted upstand

■ VE7D - Frame Cramp with a Drip

Frame cramp supplied with a drip to prevent moisture crossing the cavity. Drip position 90mm from safety end as standard.



Sizes	Units per box
125mm	250
150mm	250
175mm	250
200mm	250
225mm	200
250mm	200
275mm	200
300mm	200

Available with a slotted upstand

■ Vista Flat Ties

■ VS4 - Heavy Duty Flat Safety Tie

Used in full fill cavities or where the prevention of moisture travelling across the cavity is not an issue. Also for collar jointed walls. Tested as Type B (sound). Tested as Type 1 (strength) to BS EN 845-1.



Sizes	Units per box
150mm	250
175mm	250
200mm	250
225mm	250
250mm	250
275mm	200
300mm	200



■ Vista Flat Ties

■ SPE - Safety Plain End Tie

Used over a movement joint in a run of brickwork or blockwork with safety embedment detail or plain end.



B20 Sleeve supplied as extra

Sizes	Units per box
150mm	250
175mm	250
200mm	250
225mm	250
250mm	250
275mm	200
300mm	200



Nationwide Depots

■ Vista Channel Ties

■ VS9 – Channel Tie

Used with 25/14 stainless steel channel, it is supplied with a drip to stop moisture travelling across the cavity.



Sizes	Units per box
75mm	250
100mm	250
125mm	250
150mm	250
175mm	250
200mm	250
225mm	250
250mm	250
275mm	200
300mm	200

■ Miers 25/14 Brick Tie Channel

Key Features

- BS EN 845 Channel
- CE Certified
- Meets NHBC Requirements
- Exceeds Type 3 Capacity
- Grade 304 Stainless Steel

Technical Data

Miers 25/14 Brick Tie Channel is designed for tying a masonry panel back to steel studding posts. The channel is fixed back to the studding using self-drilling/tapping screws fixed through the channel and insulation material, into the steel studding.

The channel is supplied with pre-punched holes at close centres to allow cutting on site and has a 16mm opening to accommodate a drive socket for the fixing screws. Supplied in lengths of 2.7m.

Once fixed, a range of differing tie lengths can be positioned at any point along the channel to suit the coursing of the masonry panel.

Tie Spacing

The tie spacing is based on the channel being fixed at 600mm horizontal centres with a nominal wind speed <25m/s within a town or city following the guidance of design code BS 6399-2:1997.



Miers 25/14 Brick Tie Channel Load Capacities

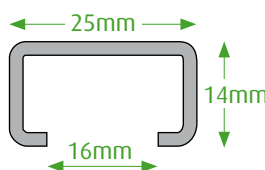
Miers 25/14 Brick Tie Channel (supplied in lengths of 2.7m) is designed to fix to the studwork at 450mm vertical centres. The pre-punched holes in the rear of the channel are spaced at 112.5mm so a fixing can always be positioned near the end of the channel. Self-tapping screws can be supplied to accommodate for fixing through insulation board of up to 110mm.

Miers can supply either stainless steel or galvanised screws for fixing the channel back to the structure.

The opening in the channel will readily accept a standard drive socket and fixing.



Altitude & distance from the coast	Vertical tie spacing for given height of brickwork		
	15m	25m	40m
Up to 150m - at least 60km from coast)	450mm	225mm	225mm
Up to 25m - at least 50km from coast)	450mm	300mm	225mm



Fixing centres	Available load
150mm	0.50kN
200mm	0.50kN
300mm	0.50kN
455mm	0.37kN
600mm	0.28kN

Nationwide Depots

■ Vista Neutras Wall Ties (Masonry/Masonry)

■ Low Thermal Conductivity Wall Ties

Neutras ties are an adaptable substitute for traditional steel ties. Wall ties crossing a cavity act as a thermal bridge, Neutras wall ties have both low thermal conductivity and high structural performance levels. This means they can be excluded from the current U value calculations in EN ISO 6946 and provide a credible solution to new legislation requirements.



Key Features

- High specific tensile strength 4-6 times higher than stainless steel
- Excellent corrosion resistance (never rusts)
- Low thermal conductivity of 0.65W/mK, which is 15-20 times lower than stainless steel
- High compressive strength compared to conventional FRP materials
- Non-magnetic and electrically non-conductive
- Meets technical requirements of NHBC



Description	Length	Units per box
Neutras 4-200	75mm (Max. 10m high)	250
Neutras 4-225	100mm	250
Neutras 4-250	125mm	250
Neutras 4-275	150mm	250
Neutras 4-300	175mm	250
Neutras 2-200	75mm (Max. 15m high)	250
Neutras 2-225	100mm	250
Neutras 2-250	125mm	250
Neutras 2-275	150mm	250
Neutras 2-300	175mm	250
Neutras 2-325	200mm	100
Neutras 2-350	225mm	100
Neutras 2-375	250mm	100
Neutras 2-400	275mm	100
Neutras 2-425	300mm	100
Neutras 1-200	75mm (Max. 18m high)	250
Neutras 1-225	100mm	250
Neutras 1-250	125mm	250
Neutras 1-275	150mm	250



■ Vista Head Restraints

■ VIR – Internal Head Restraint

The VIR head restraint is designed to resist lateral movement in wall heads, restraining them to structural soffits whilst allowing vertical movement (in order, for instance, to accommodate beam deflection).



■ VHR – Head Restraint



The VHR is a very simple, economical head restraint product. Twice holed to accommodate 100 or 140mm walls. Vertical movement can be accommodated only by allowing clearance between the top of the blockwork panel and the underside of the restraint angle. Can also be manufactured to fit 215mm blockwork.

Nationwide Depots

■ Vista Sliding Anchor Systems

■ WAS – Welded A Stem

Soffit fixed both sides where fixings can be made directly above. Heavy Duty.



■ WTS – Welded T Stem

Soffit fixed both sides where fixings can be made directly above. Heavy Duty.



■ WBS – Welded B Stem

Offset head where there is no fixing directly above. Heavy Duty.



■ WES – Welded E Stem

Fixed to the side of structure and offset to drop down centre of cavity. Heavy Duty.



■ BCS – Bent C Stem

Used as a soffit fixed head restraint. Light Duty, fixed in line with cavity below.



How to order Vista sliding anchor systems

- Choose correct Vista reference
- Confirm dimensions i.e. head and leg dimensions
- Confirm method of fixing, size and position of holes
- Confirm type of tie and length required



Nationwide Depots

■ Vista Sliding Anchor Systems

■ TDS – Twisted D Stem

Used as a soffit fixed head restraint. Light Duty, twisted head allows for fixing a right angle to cavity.



■ TFS – Twisted F Stem

Used as a side fixed head restraint. Light Duty, and stepped to bring into centre of cavity.



■ SOW – One Way Tie

Sliding one way ties used in conjunction with the sliding anchor stems. This tie only 'catches' either the inner or the outer wall. Sizes are measured from the centre of the slot.



■ STW – Two Way Tie

Sliding two way ties used in conjunction with the sliding anchor stems. This tie 'catches' both the inner or the outer wall. Sizes are measured as the overall length of the tie.



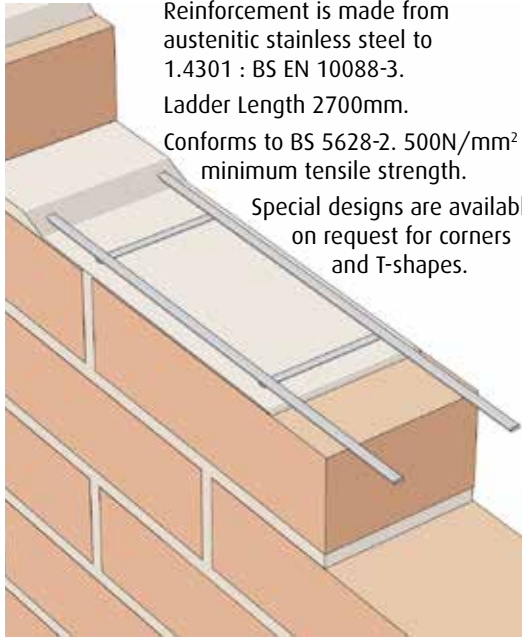
How to order Vista sliding anchor systems

- Choose correct Vista reference
- Confirm dimensions i.e. head and leg dimensions
- Confirm method of fixing, size and position of holes
- Confirm type of tie and length required



Nationwide Depots

■ Bekaert Wire Ladder (for structural applications)



Reinforcement is made from austenitic stainless steel to 1.4301 : BS EN 10088-3.

Ladder Length 2700mm.

Conforms to BS 5628-2. 500N/mm² minimum tensile strength.

Special designs are available on request for corners and T-shapes.

Overlap ends 225mm

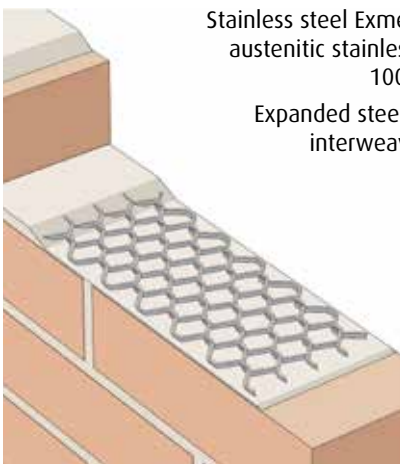
Also available in Galvanised steel, use prefix GBF

Galvanised steel in pack quantities of 25



Reference	Type	Round Wire Diameter (mm)	Ladder Width (mm)	Wall Width (mm)	Qty
SBF30W60	Single Leaf	3	60	100	20
SBF30W100	Single Leaf	3	100	140/150	20
SBF30W150	Single Leaf	3	150	190/200	20
SBF30W175	Single Leaf	3	175	215	20
SBF35W60	Single Leaf	3.5	60	100	20
SBF35W100	Single Leaf	3.5	100	140/150	20
SBF35W150	Single Leaf	3.5	150	190/200	20
SBF35W175	Single Leaf	3.5	175	215	20
SBF40W60	Single Leaf	4	60	100	20
SBF40W100	Single Leaf	4	100	140/150	20
SBF40W150	Single Leaf	4	150	190/200	20
SBF40W175	Single Leaf	4	175	215	20
SBF45W60	Single Leaf	4.5	60	100	20
SBF45W100	Single Leaf	4.5	100	140/150	20
SBF45W150	Single Leaf	4.5	150	190/200	20
SBF45W175	Single Leaf	4.5	175	215	20
SBF50W60	Single Leaf	5	60	100	20
SBF50W100	Single Leaf	5	100	140/150	20
SBF50W150	Single Leaf	5	150	190/200	20
SBF50W175	Single Leaf	5	175	215	20

■ Exmet Reinforcement (for non-structural applications)



Stainless steel Exmet is manufactured from austenitic stainless steel 1.4301 to BS EN 10088-1. Coil length 20cm.

Expanded steel mesh with no joints or interweaving to fail under stress.

Overlap ends 75mm

Also available in Galvanised steel

Reference	Material Thickness (mm)	Coil Size Width (mm)	Wall Width (mm)	Qty
76820	0.3	65	100	5
76920	0.3	115	140	5
77020	0.3	175	225	1
77120	0.3	225	265	1

■ Bekaert Murfor® Reinforcement



■ Murfor® Compact E

Murfor® Compact E masonry reinforcement consists of steel cord mesh and interwoven fiberglass roving. There are two types of Murfor® Compact E.

■ Murfor® Compact I

Murfor® Compact I masonry reinforcement consists of steel cord mesh and interwoven fiberglass roving. There are two types of Murfor® Compact I.



Nationwide Depots

Gatorback Mortarboards



Advantages

- Does not suck water from mortar
- Extends the working life of mortar
- Concave surface keeps re-tempering water on the board
- Indestructable in normal use
- Lightweight to carry with integral handle
- No trowel snags
- Reinforcement ribbing allows for large loads of material with minimum flexing
- Improves productivity

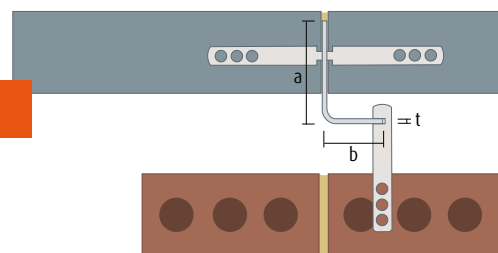
gatorback®

Nationwide Depots

■ Miers Windposts - Standard and special windposts for brick or blockwork

A range of standard and special windposts that span between floors to provide lateral support to brick or blockwork.

■ Angle Section Windpost (MWP1)

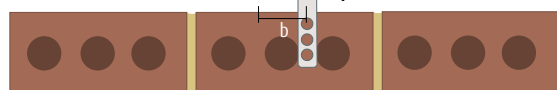


CE

304 or 316
stainless steel
complying with
BS EN 1088

Product Reference	Size (mm) a x b x t	Factored load capacity per post as a UDL per span length							
		2.5m	3.0m	3.5m	4.0m	4.5m	5.0m	5.5m	6.0m
MWP1	125 x 70 x 4	9.69	7.25	5.57	4.38	3.50	2.86	2.37	2.00
MWP1	140 x 70 x 4	12.14	9.54	7.41	5.87	4.73	3.88	3.23	2.72
MWP1	170 x 70 x 4	17.50	14.59	11.88	9.57	7.82	6.47	5.42	4.59
MWP1	130 x 70 x 5	12.91	10.02	7.76	6.14	4.94	4.04	3.36	2.83
MWP1	140 x 70 x 5	14.87	12.18	9.54	7.61	6.17	5.07	4.23	3.58
MWP1	150 x 70 x 5	16.95	14.13	11.38	9.14	7.46	6.16	5.16	4.37
MWP1	130 x 70 x 6	14.76	11.01	8.43	6.61	5.28	4.30	3.57	3.01
MWP1	140 x 70 x 6	16.68	12.38	9.45	7.38	5.89	4.80	3.98	3.35
MWP1	150 x 80 x 6	20.49	16.86	13.22	10.56	8.56	7.04	5.88	4.97
MWP1	160 x 70 x 6	22.58	18.82	15.22	12.25	10.00	8.26	6.92	5.86
MWP1	160 x 70 x 8	27.13	24.19	20.11	16.24	13.32	11.05	9.27	7.87
MWP1	180 x 80 x 8	27.13	26.94	20.83	16.43	13.21	10.80	8.97	7.56
MWP1	200 x 80 x 8	27.13	32.07	32.76	26.80	22.10	18.43	15.54	13.23

■ Channel Section Windpost (MWP2)



CE

304 or 316
stainless steel
complying with
BS EN 1088

Product Reference	Size (mm) a x b x t	Factored load capacity per post as a UDL per span length							
		2.5m	3.0m	3.5m	4.0m	4.5m	5.0m	5.5m	6.0m
MWP2	65 x 60 x 4	4.78	3.33	2.45	1.88	-	-	-	-
MWP2	75 x 60 x 4	6.52	4.55	3.35	2.57	2.03	-	-	-
MWP2	85 x 60 x 4	8.76	6.16	4.55	3.49	2.76	2.23	1.85	-
MWP2	75 x 60 x 5	7.83	5.47	4.03	3.09	2.44	1.97	-	-
MWP2	85 x 60 x 5	10.43	7.32	5.40	4.14	3.27	2.65	2.19	1.84
MWP2	95 x 60 x 5	13.19	9.32	6.90	5.29	4.19	3.39	2.81	2.36
MWP2	105 x 60 x 5	16.50	11.86	8.83	6.80	5.39	4.37	3.61	3.04
MWP2	105 x 60 x 6	16.50	13.66	10.14	7.80	6.18	5.01	4.14	3.48
MWP2	115 x 60 x 6	16.50	16.56	12.37	9.54	7.57	6.13	5.08	4.27



Nationwide Depots

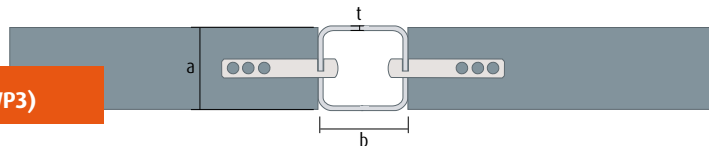
■ Miers Windposts - Standard and special windposts for brick or blockwork

■ Box Section Windpost (MWP3)



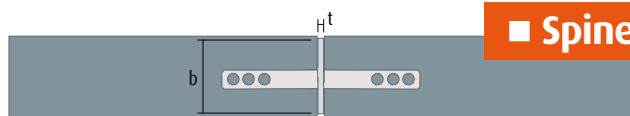
CE

304 or 316 stainless steel complying with BS EN 1088



Product Reference	Size (mm) a x b x t	Factored load capacity per post as a UDL per span length							
		2.5m	3.0m	3.5m	4.0m	4.5m	5.0m	5.5m	6.0m
MWP3	60 x 60 x 4	4.23	2.94	2.16	-	-	-	-	-
MWP3	80 x 60 x 4	8.54	5.98	4.41	3.38	2.67	2.16	-	-
MWP3	100 x 100 x 6	16.50	19.50	15.43	11.86	9.38	7.60	6.29	5.28
MWP3	120 x 120 x 8	16.50	19.50	22.50	25.50	20.84	16.90	13.99	11.76

■ Spine Section Windpost (MWP4)



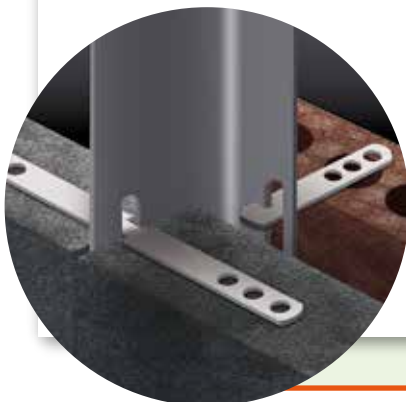
Product Reference	Size (mm) b x t	Factored load capacity per post as a UDL per span length							
		2.5m	3.0m	3.5m	4.0m	4.5m	5.0m	5.5m	6.0m
MWP4	95 x 8	5.68	4.02	2.97	2.28	-	-	-	-
MWP4	105 x 8	7.55	5.38	4.00	3.07	2.43	1.97	-	-
MWP4	115 x 8	9.71	6.99	5.22	4.03	3.19	2.59	2.14	-
MWP4	125 x 8	12.17	8.86	6.66	5.15	4.09	3.32	2.75	2.31

CE

304 or 316 stainless steel complying with BS EN 1088

■ Windpost Ties

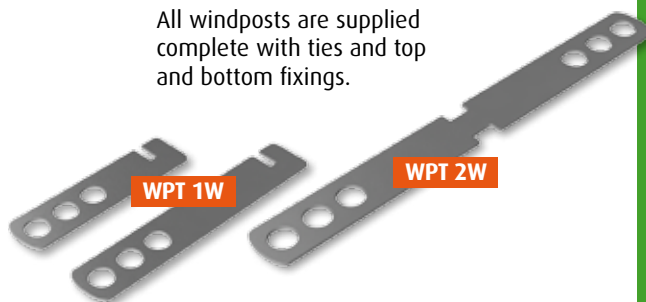
A range of one and two way ties are available to suit Miers Construction Products Windposts.



■ Fixings

Fixings can be: Concrete to concrete and Concrete to steel.

All windposts are supplied complete with ties and top and bottom fixings.



PLEASE NOTE:

Tables are based on type 1 wall ties at 225mm c/c with no vertical movement joint.

Angles are taken to have ties on each leg with the long leg restrained by the masonry.

Spine (MWP4) capacities are based on the post being fully restrained by the masonry.

Capacities shown in **bold** are limited by wall tie capacities.

Design is based on stainless steel grade 304.

Deflection is limited to span/360.

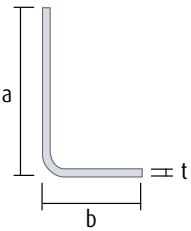
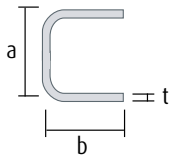
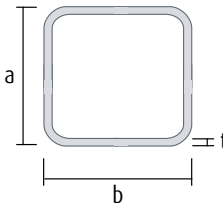
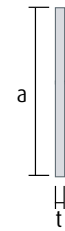
Nationwide Depots

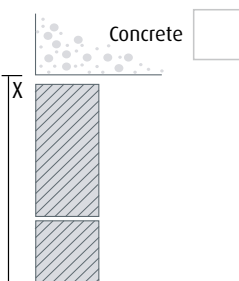
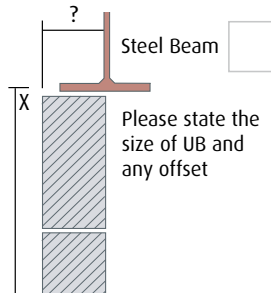
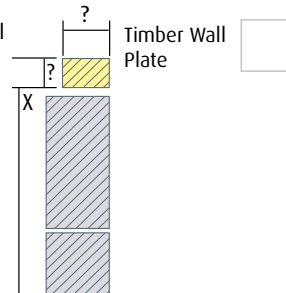
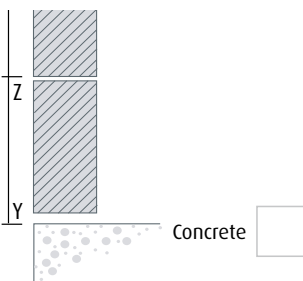
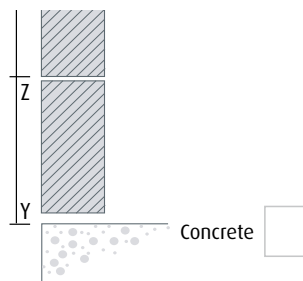
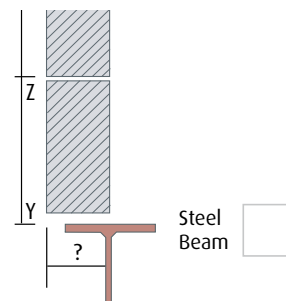
Miers Windposts - Design sheet

Extra sheets
available
from sales

If you would like us to quote or place an order for windposts please complete questions 1-10 below.
This will enable us to produce accurate quotations or to produce drawings for approval prior to manufacture.

1. Customer		Date	Order number or ref
Site address			
Post Code	Tel	Fax	Email

2. Windpost type required?	3. Structural Opening X-Y (mm)
 MWP1 <input type="checkbox"/>	4a. Section size a x b x t (mm) OR 4b. Wind load (kN/m ²) Maximum supported panel width
 MWP2 <input type="checkbox"/>	
 MPW3 <input type="checkbox"/>	
 MPW4 <input type="checkbox"/>	
5. Quantity of windposts to this specification	

6. Top fixing to?		
 Concrete <input type="checkbox"/>	 Steel Beam <input type="checkbox"/> Please state the size of UB and any offset	 Timber Wall Plate <input type="checkbox"/> Please state the size of Wall Plate and any offset
7. Base fixing to?		
 Concrete <input type="checkbox"/>	 Concrete <input type="checkbox"/>	 Steel Beam <input type="checkbox"/> Please state the size of UB and any offset

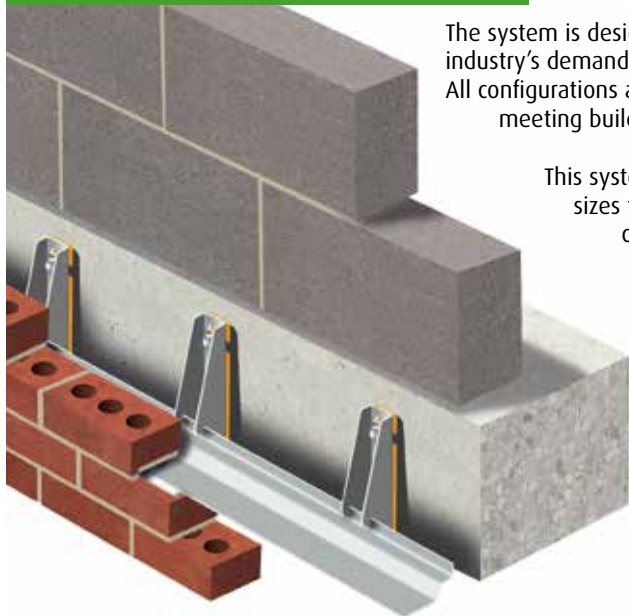
8. Wall construction inner leaf/block?	9. Slot dimensions from base to first tie position to match coursing. Y-Z (mm)
Cavity width?	10. Please attach available drawings showing section through building if available (tick if drawings attached)
External leaf/brick?	

sales@miersconstructionproducts.co.uk

Nationwide Depots

■ Miers Masonry Support Range

■ Component Shelf System



The system is designed to meet with the industry's demand for speed of construction. All configurations are available ex-stock, meeting builder's needs.

This system offers a range of bracket sizes to accommodate various cavity widths. It is a fully adjustable system accommodating loads up to 14 kN/m.

Material

Stainless Steel shelf system and brackets Grade 304 (European grade 1.4307 & 1.4301).

Key Features

- Available ex-stock
- Easy to specify
- Front loading for ease of installation
- Onsite adjustability
- Speed of installation

Loading Specification

Supports unfactored masonry loads up to 14kN per metre.

■ Welded Shelf System



A rigid Masonry Support System manufactured bespoke to accommodate projects with very specific requirements; eg. reduced cavity widths or increased loading.

The Welded Shelf Systems are fabricated to engineer specifications and design assistance can be provided by our Technical Team.

A range of brackets are available for the Welded Shelf System, (see below).

Material

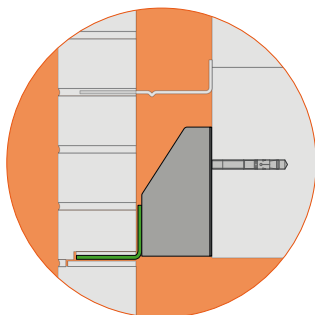
Stainless Steel shelf system and brackets Grade 304 (European grade 1.4307 & 1.4301).

Key Features

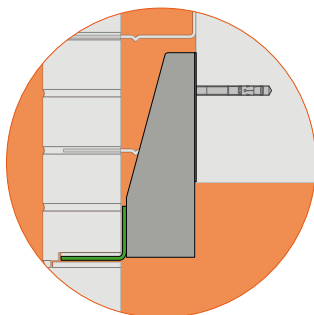
- Extra strength to support extreme loads
- Can be supplied in a variety of configurations
- Onsite adjustability
- Ease of installation

Loading Specification

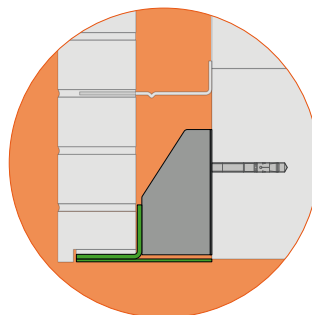
Supports unfactored masonry loads up to and exceeding 14kN per metre.



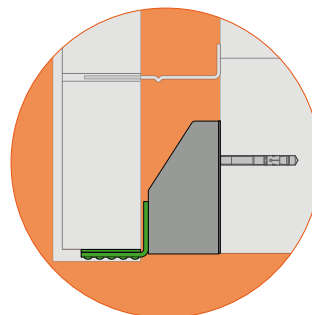
■ Welded Brackets



■ Dropper Brackets



■ Cavity Closer



■ Plaster Key

Nationwide Depots

■ Miers Masonry Support Range

Our Brick On Soffit System range provides a lighter alternative to concrete, which is faster to install than traditional hanging brick systems.

Installed to a pre-fitted masonry support system, the Brick On Soffit System allows increased adjustability along three axis. Produced offsite, the Brick On Soffit System offers a quicker, lighter, easier and more cost efficient option.

Material

Stainless Steel, Grade 304 (European grade 1.4307 & 1.4301) BBA approved & 25mm brick slip.

Key Features

- Simplicity of installation
- No brick cutting required onsite
- Support steelwork is completely hidden
- Adjustability in all planes

Loading Specification

Masonry shelf above supports imposed loads.

■ Brick On Soffit System - Brick slip bolt up system



■ Brick Slip Soffit Panels - Deep soffit areas



Brick Slip Soffit Panels provide a lightweight pre-fabricated brick slip cladding system; which achieves deep soffits that blend seamlessly with already constructed brickwork onsite.

Produced offsite, this innovative system enables masonry soffits to be assembled with speed and efficiency without the need for specialist installation.

Material

9mm magnesium board, BBA approved adhesive & 25mm brick slip.

Key Features

- Achieve deep brick soffit detail
- Fast and easy installation
- Lightweight
- No shuttering required
- Reduced labour – no brick fixing required onsite
- Blends seamlessly with already constructed brickwork
- Various bond patterns can be achieved

■ Brick Slip Lintels - Window and door openings

BBA approved Brick Slip Lintels can be used over small openings, thus eliminating the need for additional masonry supports.

Supplied in stainless steel, Brick Slip Lintels have the same profile as a standard lintel and are delivered to site as a one-piece unit complete with brick slips attached, eliminating the need for specialist installation onsite.

Material

Stainless Steel, Grade 304 (European grade 1.4307 & 1.4301) BBA approved adhesive & 25mm brick slip.

Key Features

- Speed of installation – installed as a standard lintel
- Cost saving
- Available in stainless steel

Loading Specification

Supports loads over small scale openings – contact our technical team for design requirements.



Nationwide Depots

■ Ancon Standard Ties (Masonry Heavy Duty)



■ ST1 - Standard Tie

The Ancon ST1 is suitable for cavities from 50mm to 225mm and can be used for all types of buildings of any height, anywhere in the British Isles. The section that spans the cavity has a series of holes to provide water drips. The ST1 has a measured dynamic stiffness of $<113\text{MN/m}^3$ that meets the performance requirement of Approved Document E for use in external masonry walls. For internal separating walls of new-build attached dwellings see HRT4.

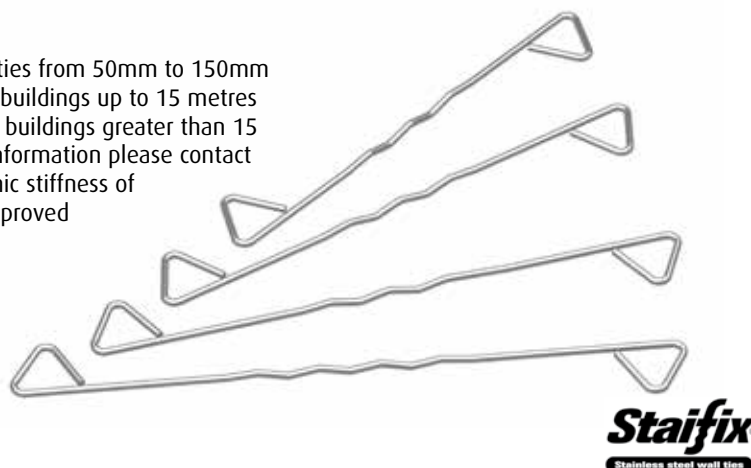
Sizes	Suitable For Cavity Size
200mm	50mm - 75mm
225mm	76mm - 100mm
250mm	101mm - 125mm
275mm	126mm - 150mm
300mm	151mm - 175mm
325mm	176mm - 200mm
350mm	201mm - 225mm

■ Ancon Staifix RT2 Ties (Masonry General Purpose)

■ RT2 - Type 2 Tie

The Staifix RT2 is a general purpose tie. It is suitable for cavities from 50mm to 150mm and can be used for domestic houses and small commercial buildings up to 15 metres in height. In many cases, Staifix RT2 wall ties can be used in buildings greater than 15 metres if shown to be adequate by calculation. For further information please contact our Technical Services Team. The RT2 has a measured dynamic stiffness of $<113\text{MN/m}^3$ that meets the performance requirement of Approved Document E for use in external masonry walls.

Sizes	Suitable For Cavity Size
200mm	50mm - 75mm
225mm	76mm - 100mm
250mm	101mm - 125mm
275mm	126mm - 150mm

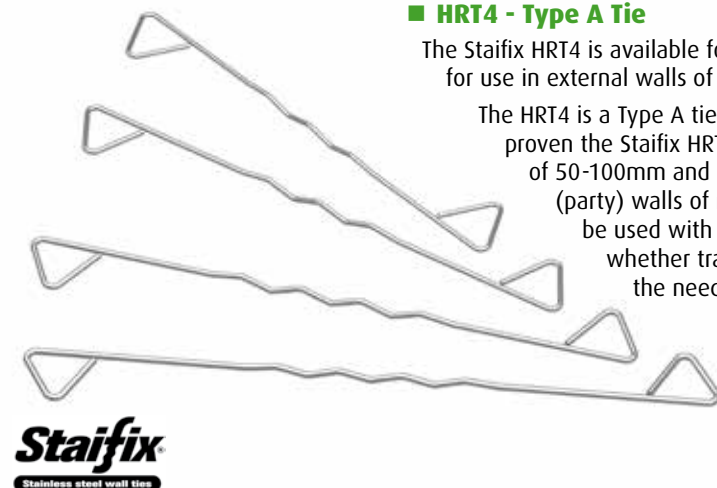


■ Ancon Staifix HRT4 Ties (Masonry Light Duty)

■ HRT4 - Type A Tie

The Staifix HRT4 is available for cavities from 50mm to 150mm. As a Type 4 tie it is suitable for use in external walls of domestic houses up to 10 metres in height.

The HRT4 is a Type A tie for separating walls of any height. Independent tests have proven the Staifix HRT4 has a measured dynamic stiffness of $<4.8\text{MN/m}^3$ at a cavity of 50-100mm and 125-150mm and is therefore suitable for internal separating (party) walls of new-build attached dwellings with these cavities. The HRT4 can be used with all approved robust details for cavity masonry separating walls, whether traditional or thin-joint blockwork. Use of these details eliminates the need for pre-completion sound testing.



Sizes	Suitable For Cavity Size
200mm	50mm - 75mm
225mm	76mm - 100mm
250mm	101mm - 125mm
275mm	126mm - 150mm

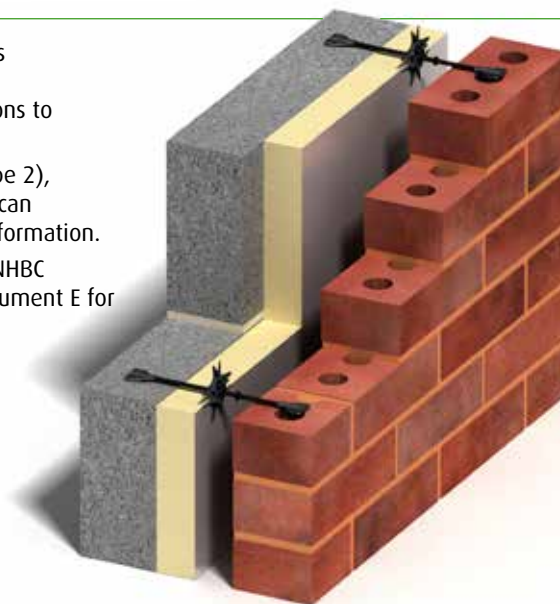
Nationwide Depots

■ Ancon Teplo Basalt Fibre Ties

The Ancon Teplo-BF is suitable for cavities from 50mm to 450mm and is manufactured from pultruded basalt fibres. This material has a thermal conductivity of only 0.7W/mK which can be shown in U-value calculations to reduce insulation thickness and wall footprint.

The Ancon Teplo-BF range comprises Teplo-BF1 (Type 1), Teplo-BF2 (Type 2), Teplo-BF3 (Type 3) and Teplo-BF4 (Type 4). Decreasing wall tie centres can increase performance level e.g Type 3 to Type 2. Contact us for more information.

The Ancon Teplo range has BBA approval and can be used in line with NHBC standards. It also meets the performance requirement of Approved Document E for use in external masonry walls. For internal separating walls of new-build attached dwellings use HRT4.



■ Teplo - BF1/2/4

Sizes	Suitable For Cavity Size
200mm	50mm - 75mm
225mm	76mm - 100mm
250mm	101mm - 125mm

■ Teplo - BF3

Sizes	Suitable For Cavity Size
450mm	301mm - 325mm
475mm	326mm - 350mm
500mm	351mm - 375mm
525mm	376mm - 400mm

■ Teplo - BF1/2

Sizes	Suitable For Cavity Size
275mm	126mm - 150mm

■ Teplo - BF4

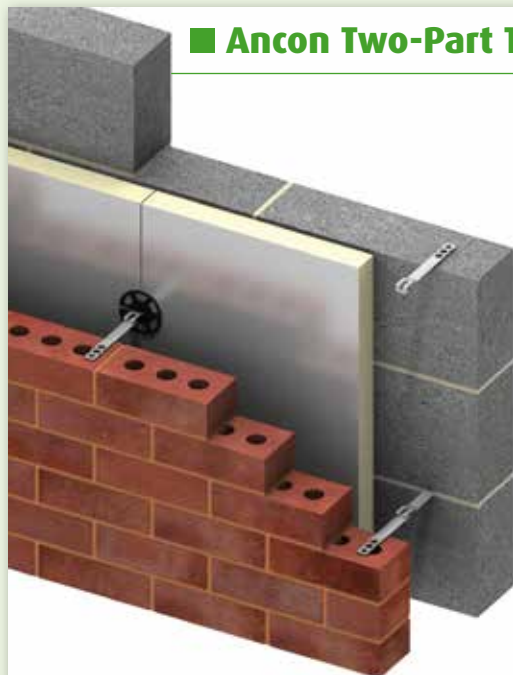
Sizes	Suitable For Cavity Size
550mm	401mm - 425mm
575mm	426mm - 450mm

■ Teplo - BF2

Sizes	Suitable For Cavity Size
300mm	151mm - 175mm
325mm	176mm - 200mm
350mm	201mm - 225mm
375mm	226mm - 250mm
400mm	251mm - 275mm
425mm	276mm - 300mm

Ancon

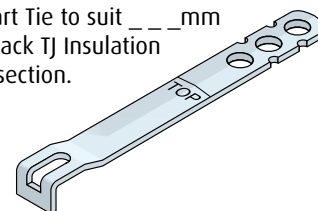
■ Ancon Two-Part Tie



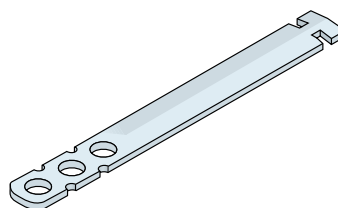
Long ties for cavities of 150mm and above can often be difficult to balance and keep horizontal when built into the inner leaf. As an alternative, the Ancon Two-Part Tie has one section built into the blockwork and a second section is then fixed as the outer leaf is built. An embedment of 75mm is required at each end. The inner tie is usually manufactured in lengths of 170mm with variation in the cavity width being accommodated by the length of the outer section. Where insulation thickness is in excess of 60mm, the inner section should be longer than the standard 170mm to ensure the connection between the two parts is made in the open cavity.

To specify or order this tie simply quote 'Ancon Two-Part Tie to suit ___mm cavity with an insulation thickness of ___mm'. The black TJ Insulation Retaining Clip is recommended for use with the inner section.

Using the standard inner section, Ancon Two-Part Ties sustain loads which exceed the requirements for a Type 2 tie to PD 6697 for cavities up to 400mm.



■ Two-Part Tie



Ancon

Nationwide Depots

■ Ancon Frame Cramps

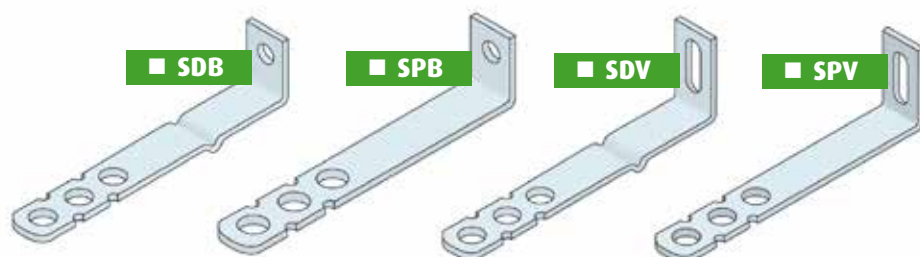
Frame cramps are an ideal solution where a restraint is required between masonry and in-situ structures. They can be fixed to a range of materials including concrete, steelwork and masonry. Frame cramps referenced **_P_** have a plain shank, while those referenced **_D_** feature an integral drip for use across a cavity.

■ SDB - Frame Cramps

Ancon SDB Frame Cramps used as cavity wall ties exceed the requirements of a Type 2 tie to PD 6697 for lengths up to 300mm. They have a 7mm diameter hole to suit a range of fixings. Ancon M6 single expansion bolts are recommended for fixing to concrete and M6 set screws or SDTSS-38-5PT self-drilling screws for fixing to steelwork. Frame cramps can be fixed to masonry with suitable plugs and screws or resin anchors. Poor substrates will limit the capacity of fixings and site testing is advisable in such applications. All fixings should be used in conjunction with a DIN washer.

■ SDV - Frame Cramps

Ancon SDV Frame Cramps have an 8mm x 30mm vertical slot that allows vertical fixing position adjustment where required. Their load capacity is limited when fixed in the top of the slot therefore they are not recommended for applications where tension is a consideration.



Ancon

Sizes	Suitable For Cavity Size
100mm	20mm - 44mm
125mm	45mm - 69mm
150mm	70mm - 94mm
175mm	95mm - 119mm
200mm	120mm - 144mm
225mm	145mm - 169mm
250mm	170mm - 194mm
275mm	195mm - 219mm
300mm	220mm - 244mm

■ Ancon Channel Ties



■ 21/18 Omega Channel Tie

Ancon 21/18 Omega Channel is a high performance, self-anchoring, cast-in channel slot suitable for use with Ancon wall ties to provide the necessary restraint to the outer leaf of masonry. The section is only 18mm deep and can be used where there is reduced cover to reinforcement and concrete as thin as 75mm. Available in 100mm and 3000mm lengths, Ancon 21/18 Omega Channel is filled with polystyrene to help prevent the ingress of concrete. Nail holes aid the fixing of the slot to timber formwork.

■ 25/14 Channel Tie

Ancon wall ties can also be used with our 25/14 Channels. 25/14 Channels are supplied plain-backed for surface fixing. Maximum safe working loads of surface-fixed channels will be subject to suitable fixings, for further information please contact our Technical Services Team.



Sizes Suitable For Cavity Size

Sizes	Suitable For Cavity Size
125mm	45mm - 69mm
150mm	70mm - 94mm
175mm	95mm - 119mm
200mm	120mm - 144mm
225mm	145mm - 169mm
250mm	170mm - 194mm
275mm	195mm - 219mm
300mm	220mm - 244mm

Ancon

Nationwide Depots

■ Ancon Head Restraints

Ancon Head Restraints provide the necessary restraint to the top of masonry walls. They allow for vertical movement to accommodate shrinkage or thermal movement of the wall or structural frame, while restraining lateral loads.

Where head restraints are to be connected to a concrete frame, the project Structural Engineer should advise whether the concrete is cracked or un-cracked.

In the absence of this information fixings will be supplied suitable for un-cracked concrete.

■ Ancon IHR - Internal Head Restraint

The Ancon IHR is designed to restrain the top of internal walls or the top of the inner leaf of a cavity wall.

It comprises an L-shaped channel stem and a top section available in a variety of designs to suit different fixing methods and substrates; the top section slides in the channel to accommodate vertical movement between the blockwork and the structure.

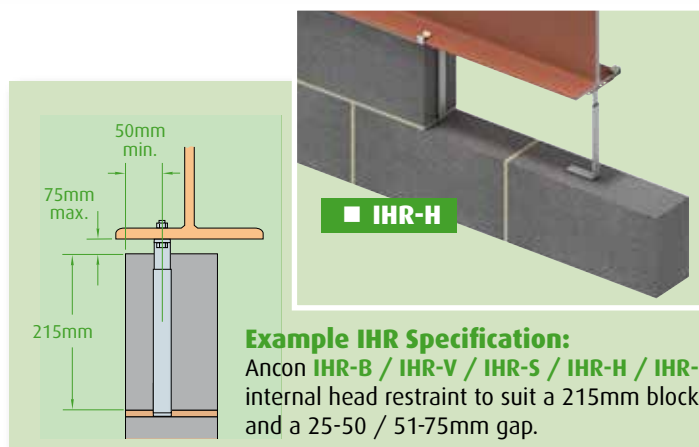
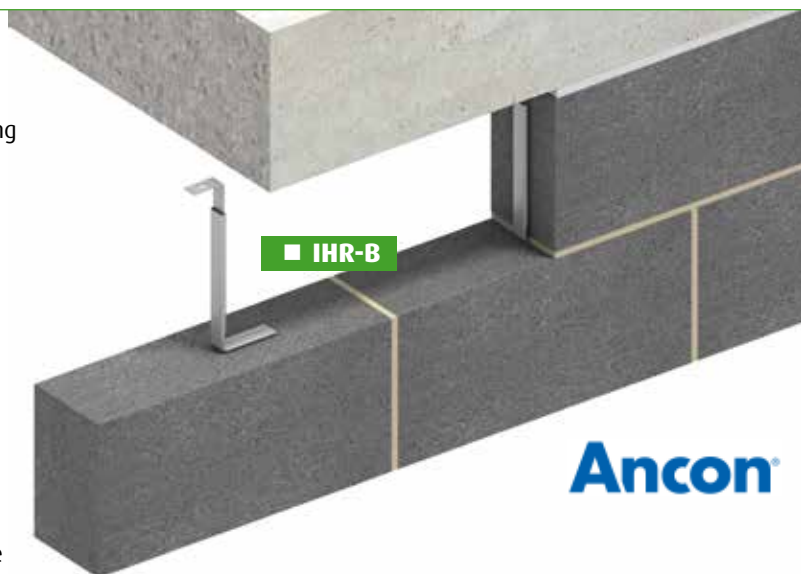
The standard length of an IHR sliding top section will accommodate a gap of up to 50mm. Longer top sections are available to accommodate gaps of up to 75mm, ideal when a fire stop is being incorporated at the wall head or where greater deflection is expected in the floor.

The channel stem is closed at the front to prevent mortar ingress. The base of the stem should be built into the bed joint with the centre of the stem no closer than 50mm from the edge of the block. The vertical joint should be filled with mortar each side of the stem.

The standard height of an IHR will suit a 215mm block. Other stem lengths are available on request, however, longer stems may be unable to accommodate a gap above 40mm.

The table provides the design resistance per metre for the standard IHR range when installed with a 25mm, 50mm and 75mm gap, at 900mm and 450mm centres.

The sliding tie can be provided with either a hole (IHR - B) or slot (IHR - V) to suit M8 bolts, with a notch end to fix directly into a 38/17 or 30/20 cast-in channel (IHR - C) and with a notch end to suit the Hammer-On Section that attaches to a 6.8mm - 25mm steel flange without site drilling (IHR - H).



Example IHR Specification:

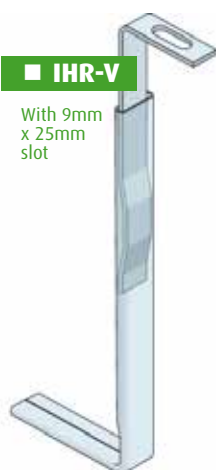
Ancon IHR-B / IHR-V / IHR-S / IHR-H / IHR-C internal head restraint to suit a 215mm block and a 25-50 / 51-75mm gap.

Product Reference	Spacing	Design Resistance for IHR Range		
		25mm Gap	50mm Gap	75mm Gap
IHR-B, IHR-V	900mm	1.78kN/m	1.22kN/m	1.06kN/m
IHR-C and IHR-S	450mm	3.56kN/m	2.44kN/m	2.11kN/m
IHR-H	900mm	1.13kN/m	1.13kN/m	1.06kN/m
	450mm	2.27kN/m	2.27kN/m	2.11kN/m



■ IHR-B

With 9mm dia. hole



■ IHR-V

With 9mm x 25mm slot



■ IHR-S

With 6mm dia. hole



■ IHR-H

Supplied with Hammer-On Section



■ IHR-C

To suit cast-in channel

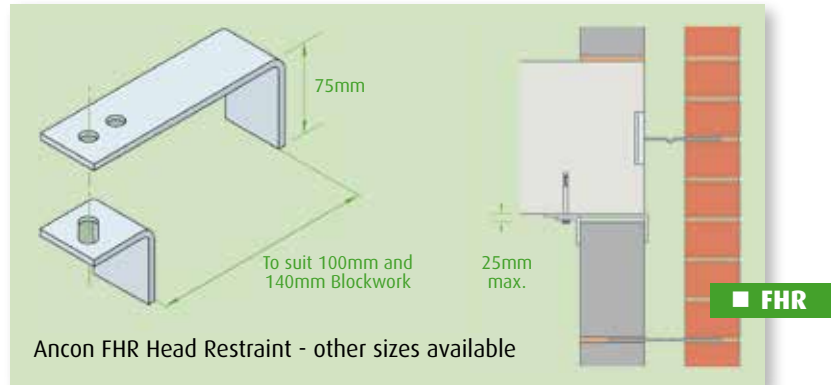
Nationwide Depots

■ Ancon Head Restraints



■ Ancon FHR - Head Restraint

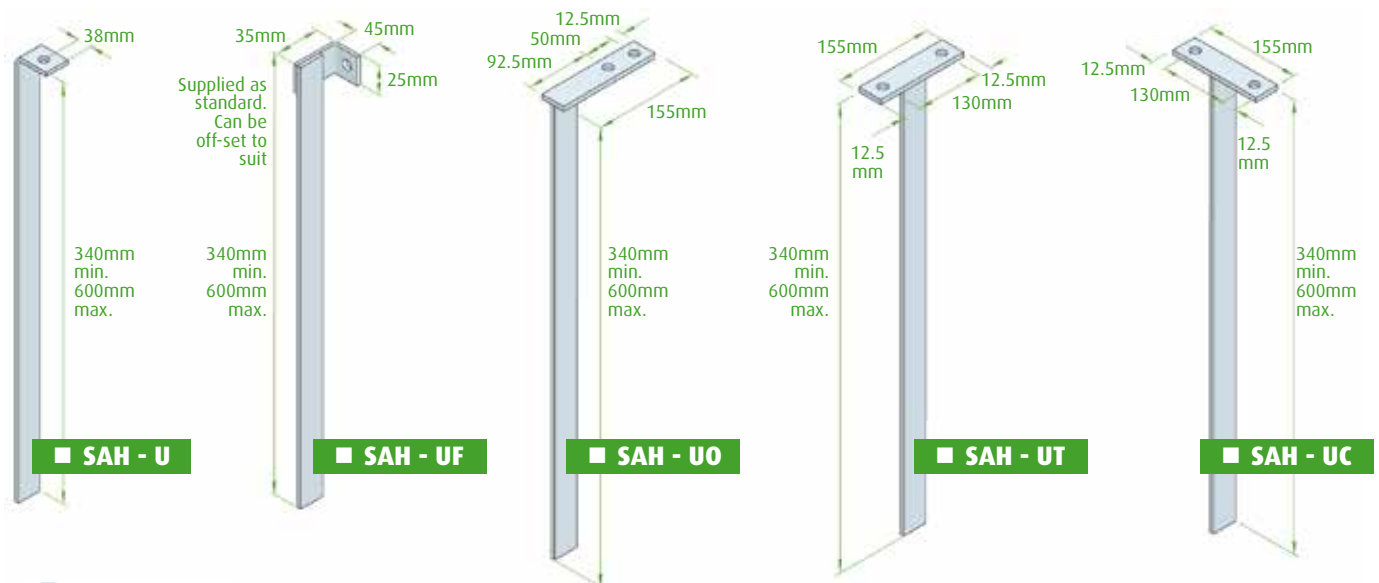
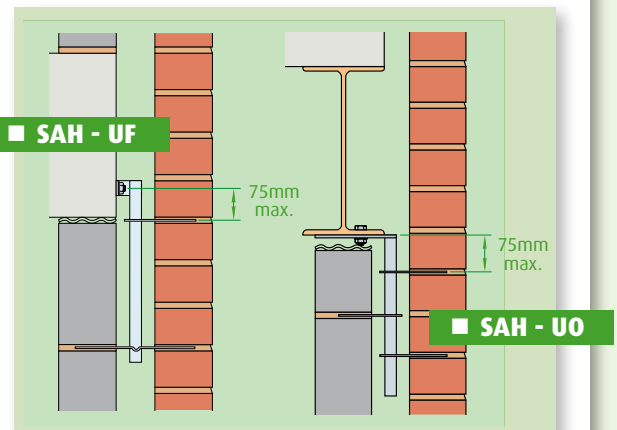
The Ancon FHR Head Restraint is used for restraining the top of internal walls or the internal leaf of a cavity wall. The two angles clamp the top of the wall and have 10mm diameter holes to suit M8 bolts. They are supplied with two holes in the longer angle to allow the restraint to fit 100mm and 140mm blockwork. Each restraint provides a design resistance of 1890N.



■ Ancon SAH - Sliding Anchors

Ancon SAH Sliding Anchors have stems which fit within the cavity and accept ties that slide to accommodate vertical movement. Available with five different head options as standard, they can be supplied with one-way or two-way ties with safety ends.

The standard fixing hole is 12mm diameter to suit Ancon M10 Expansion Bolts (concrete), Ancon M10 Set Screws (steel) or M10 T-Head Bolts to fit Ancon 28/15 Channel. Ancon SAH Sliding Anchors have a design resistance of 755N per stem when the upper tie is within 75mm of the fixing. Ties should be spaced at a minimum of 150mm and at least two ties should be used per stem.



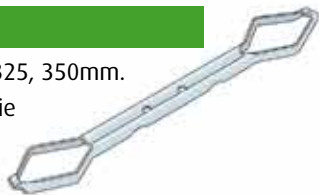
Ancon

Nationwide Depots

■ Ancon Wall Ties And Restraints Summary

■ ST1- Standard Wall Ties

Lengths 200, 225, 250, 275, 300, 325, 350mm.
Conforms to PD 6697 as a Type 1 tie in M2 mortar.



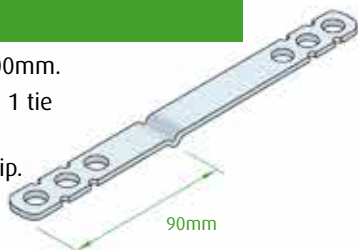
■ Teplo-BF1

Lengths 200, 225, 250, 275mm.
Conforms to PD 6697 as a Type 1 tie.



■ SDS

Lengths 200, 225, 250, 275, 300mm.
Conforms to PD 6697 as a Type 1 tie in M2 mortar (iv) mortar.
Also available with a central drip.



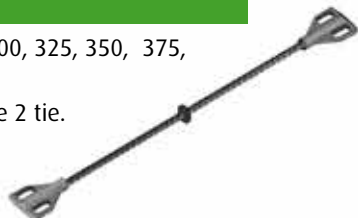
■ RT2

Lengths 200, 225, 250, 275mm.
Conforms to PD 6697 as a Type 2 tie.



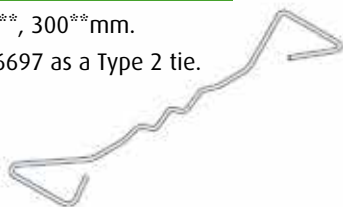
■ Teplo-BF2

Lengths 200, 225, 250, 275, 300, 325, 350, 375, 400, 425mm.
Conforms to PD 6697 as a Type 2 tie.



■ DT (Double Triangle)

Lengths 150*, 200*, 225**, 250**, 300**mm.
*Conforms to EN 845-1 and PD 6697 as a Type 2 tie.
**Conforms to EN 845-1 and PD 6697 as a Type 3 tie.



■ RD3

Lengths 250, 275mm.
Conforms to PD 6697 as a Type 3 tie.



■ HRT4

Lengths 200, 225, 250, 275mm.
Conforms to PD 6697 as a Type 4 tie.



Suitable for party walls with 50-100mm and 125-150mm cavities.



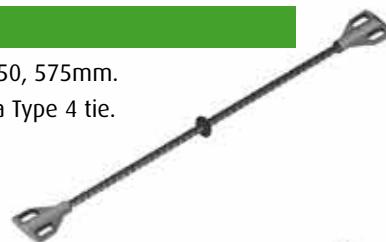
■ HRD4

Lengths 250, 275mm.
Conforms to PD 6697 as a Type 4 tie.



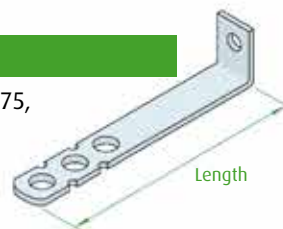
■ Teplo-BF4

Lengths 200, 225, 250, 550, 575mm.
Conforms to PD 6697 as a Type 4 tie.



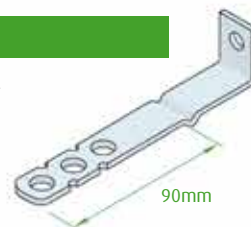
■ SPB

Lengths 75, 100, 125, 150, 175, 200, 225, 250, 275, 300mm.
(Heavy duty version also available)



■ SDB

Lengths 125, 150, 175, 200, 225, 250, 275, 300mm.



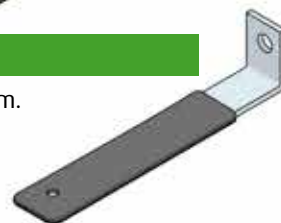
■ Teplo-L-Tie

Lengths 165, 190, 215, 240, 265, 290, 315, 340, 365mm.



■ PPB

Lengths 125, 150, 175, 200, 225mm.



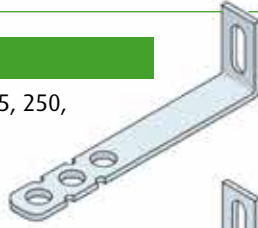
Ancon

Nationwide Depots

■ Ancon Wall Ties And Restraints Summary

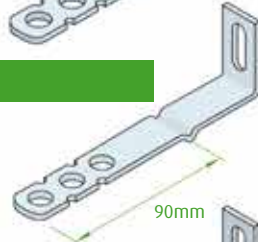
■ SPV

Lengths 75, 100, 125, 150, 175, 200, 225, 250, 275, 300mm.



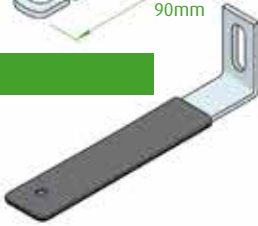
■ SDV

Lengths 125, 150, 175, 200, 225, 250, 275, 300mm.



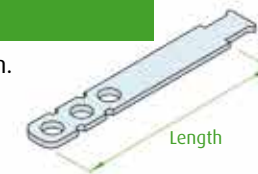
■ PPV

Lengths 125, 150, 175, 200, 225mm.



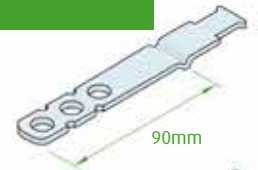
■ SP21

Lengths 75, 100, 125, 150, 175, 200mm.
For use with 21/18 Omega Channel.



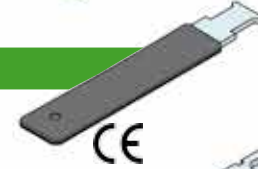
■ SD21

Lengths 125, 150, 175, 200, 225, 250, 275, 300mm.
For use with 21/18 Omega Channel.



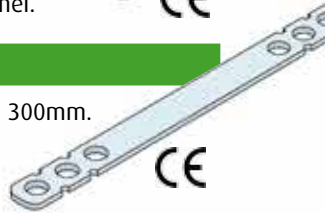
■ PP21

Lengths 125, 150, 175, 200, 225mm.
For use with 21/18 Omega Channel.



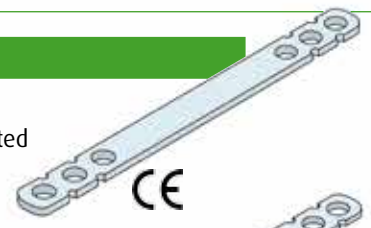
■ SPS

Lengths 150, 200, 225, 250, 275, 300mm.
Not suitable for collar-jointed construction.



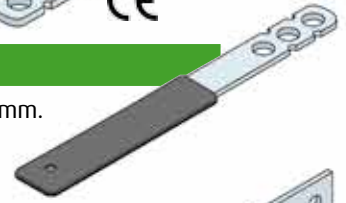
■ SPS CJ

Length 150mm.
(3mm thickness for collar-jointed construction).



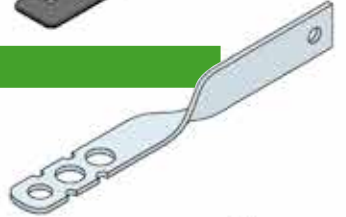
■ PPS

Lengths 175, 225, 250, 275, 300mm.



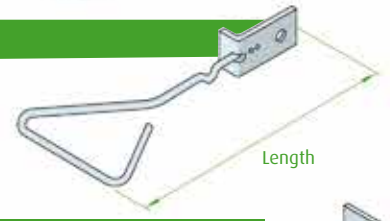
■ SHX

Lengths 150, 175, 200, 225mm.



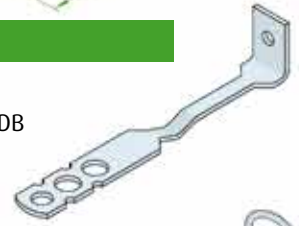
■ WHX

Lengths 150, 175, 200mm.



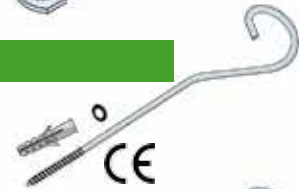
■ SRB

Lengths 125, 150, 175, 200, 300mm.
(Used in applications instead of the SDB where greater flexibility is required).



■ Cavity Starter Tie

Supplied with an 8mm nylon wall plug and neoprene ring Lengths 180, 200, 230mm.



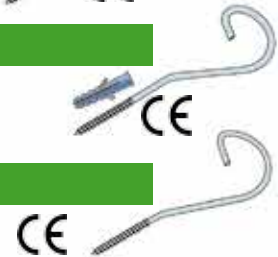
■ Starter Tie

Supplied with an 8mm nylon wall plug.
Length 135mm.



■ Frame Tie

Length 115mm.



Recommended Lengths for Masonry/Masonry Wall Ties

Tie Length	Cavity Width
200mm	(50-75mm cavity)
225mm	(76-100mm cavity)
250mm	(101-125mm cavity)
275mm	(126-150mm cavity)
300mm	(151-175mm cavity)
325mm	(176-200mm cavity)
350mm	(201-225mm cavity)
375mm	(226-250mm cavity)
400mm	(251-275mm cavity)
425mm	(276-300mm cavity)

Recommended Lengths for Frame Cramps and Cast-in Channel Ties*

Tie Length	Cavity Width
75mm	(<20mm cavity)
100mm	(20-44mm cavity)
125mm	(45-69mm cavity)
150mm	(70-94mm cavity)
175mm	(95-119mm cavity)
200mm	(120-144mm cavity)
225mm	(145-169mm cavity)

Miers Technical Service Team will be able to advise on the correct selection and use of Ancon wall Ties and Restraints.

Ancon

*Excluding surface-fixed channels, Ancon Fastrack and Ancon Teplo-L-Tie.

Nationwide Depots

■ Hessian Rolls (Frost Protection)



Hessian Rolls for frost protection and curing of brickwork & concrete.

Roll Size (m)

50 x 1.37

■ Miers Miothene Strip/Roll



Standard density polyethylene joint filler complete with perforated tear off strip

We can supply virtually any combination of width, thickness & perforation.

MIERS

Code	Depth (mm)	Width (mm)
100/10/10	100	10
140/10/10	140	10
175/10/10	175	10
215/10/10	215	10
100/12/12	100	12
140/12/12	140	12
175/12/12	175	12
215/12/12	215	12

■ Temporary Protective Sheeting



Size (m)

4 x 25

■ Corrugated Protection Board



Also available as fire retardant.

Size

2.4m x 1.2m x 2mm

■ Bond It Line Marker Paint

Colours

Red x 750ml

Yellow x 750ml

Blue x 750ml



bond it

Nationwide Depots

■ Fischer BN Bolts

Bolts available in stainless steel or zinc plated.



Sizes

6 x 55mm
8 x 75mm
10 x 85mm
12 x 115mm
12 x 140mm

■ Fischer Hammer Fix

Other sizes available on request.



Sizes

6 x 40mm
6 x 60mm
8 x 60mm

■ SDS Drill Bits



Sizes

6 x 110mm
6 x 160/100mm
8 x 160/100mm
10 x 160/100mm
12 x 210/150mm
14 x 210/150mm

■ TEK Screws

Also available in stainless steel.



Sizes

5.5 x 38mm
5.5 x 80mm
5.5 x 105mm
5.5 x 130mm

■ Bond It Fireshield

Intumescent Sealant.

Full range of sealants available.

Available in White but can be overpainted.

Sizes

310ml cartridge



Nationwide Depots

Brickwork Products Index

Brickwork Products	Page No.	Brickwork Products	Page No.
DPC and DPC Accessories		Bekaert Wire Ladder	
Visqueen Zedex CPT DPC	3	(for structural applications)	15
Zedex Housing Grade DPC	3	Bekaer Murfor® Reinforcement	15
Visqueen Zedex High Bond DPC	3	Exmet Reinforcement	
Toughsheet Polythene DPC	3	(for non-structural applications)	15
DPC Accessories –		Gatorback Mortarboards	16
Fixing Strip			
Fixing Pins		Miers Windposts	
Jointing Tape	3	MWP1 – Angle Section Windpost	17
ARC Party Wall DPC	4	MWP2 – Channel Section Windpost	17
ARC Insulated DPC	4	MWP3 – Box Section Windpost	18
ARC Rockfibre Insulated DPC	4	MWP4 – Spine Section Windpost	18
ARC Cavity Stop Socks & TCBs	4	WPT 1W – One Way Tie	18
ARC Party Wall Cavity Stop Sock	5	WPT 2W – Two Way Tie	18
ARC T-Barrier	5	Miers Windpost – Design Sheet	19
ARC Smart Closer	5	Miers Masonry Support Range	
ARC Eco-Closer and Eco-Closer Plus	6	Component Shelf System	20
Thermabate Insulated Cavity Closers	6	Welded Shelf System	20
Timloc Thermo-loc EPS Cavity-Closer	7	Brick On Soffit System - Brick Slip Bolt Up	21
Timloc Everdry Cavity Trays	7	Brick Slip Soffit Panels - Deep Soffit Areas	21
Rytweep Weep Vent	8	Brick Slip Lintels -	
Rytweep Weep Vent Tube	8	Windows and Door Openings	21
Airflow Dual Weep Vent	8	Ancon Ties	
Timloc Tunnel Weep Vent	8	Ancon Standard Ties – ST1	22
Timloc Cavity Wall Weep Vent Type 1143	8	Ancon Staifix Ties – RT2 Type 2	22
Timloc Underfloor & Through Wall Venting	8	Ancon Staifix Ties – HRT4 Type A	22
Vista Ties and Head Restraints		Ancon Teplo Basalt Fibre Ties –	
Vista Light Duty Housing Tie	9	BF1, BF2, BF3, BF4	23
Vista General Purpose Wall Tie	9	Ancon Two Part Tie	23
Vista VST1 – Type 1 Heavy Duty Tie	9	Ancon Frame Cramps – SDB and SDV	24
Vista Timber Frame Tie	9	Ancon Channel Ties – 21/18 and 25/14	24
Vista TPT – Two Part Tie	10	Ancon IHR Head Restraints	
Vista VE7 – Frame Cramp Tie	10	IHR-B, IHR-V, IHR-S, IHR-H, IHR-C	25
Vista VE7D – Frame Cramp with a Drip	10	Ancon SAH Sliding Anchors	
Vista VS4 – Heavy Duty Flat Safety Tie	10	SAH-U, SHR-UF, SHR-UO, SAH-UT	
Vista SPE – Safety Plain End Tie	10	and SAH-UC	26
Vista VS9 – Channel Tie	11	Ancon Wall Ties and Restraints	
Miers 25/14 Brick Tie Channel	11	Summary	27-28
Vista Neutras Ties		Hessian Rolls (Frost Protection)	29
Low Thermal Conductivity Wall Ties Range	12	Temporary Protective Sheeting	29
Vista VIR – Internal Head Restraint	12	Miers Miothene Strip/Roll	29
Vista VHR – Head Restraint	12	Corrugated Protection Board	29
Vista Sliding Anchor Systems		Bond It Line Marker Paint	29
WAS – Welded A Stem	13	Fischer BN Bolts	30
WTS – Welded T Stem	13	Fischer Hammer Fix	30
WBS – Welded B Stem	13	SDS Drill Bits	30
WES – Welded E Stem	13	TEK Screws	30
BCS – Bent C Stem	13	Bond It Fireshield sealant	30
TDS – Twisted D Stem	14		
TFS – Twisted F Stem	14		
SOW – One Way Tie	14		
STW – Two Way Tie	14		

Nationwide Depots

Miers Group Branches Throughout the UK



**Nationwide
supply of building
accessories...**

...we offer

- Independently run business
- Nationwide coverage
- Commitment to the highest standard of service
- A unique level of expertise & experience

Call Miers on

St Neots	01480 702222
Airdrie	01236 541130
Birmingham	0121 2893 293
Bordon	01420 200121
Launceston	01566 721011
Warrington	01925 202128

Iss 4 September 2018



Construction Products Ltd

Head Office

Hawkesden Road, St Neots, Cambs PE19 1QS

t 01480 702222

f 01480 702223

e sales@miersconstructionproducts.co.uk

www.miersconstructionproducts.co.uk



Kestral Construction Products Ltd

Unit 2, Central Trading Estate, Bewsey Road,
Warrington, Cheshire WA2 7LP

t 01744 830001

f 01744 830002

e sales@kestral.net

www.kestral.net

Part of the Miers Construction Products Group